



Lilienthal Glide 2010

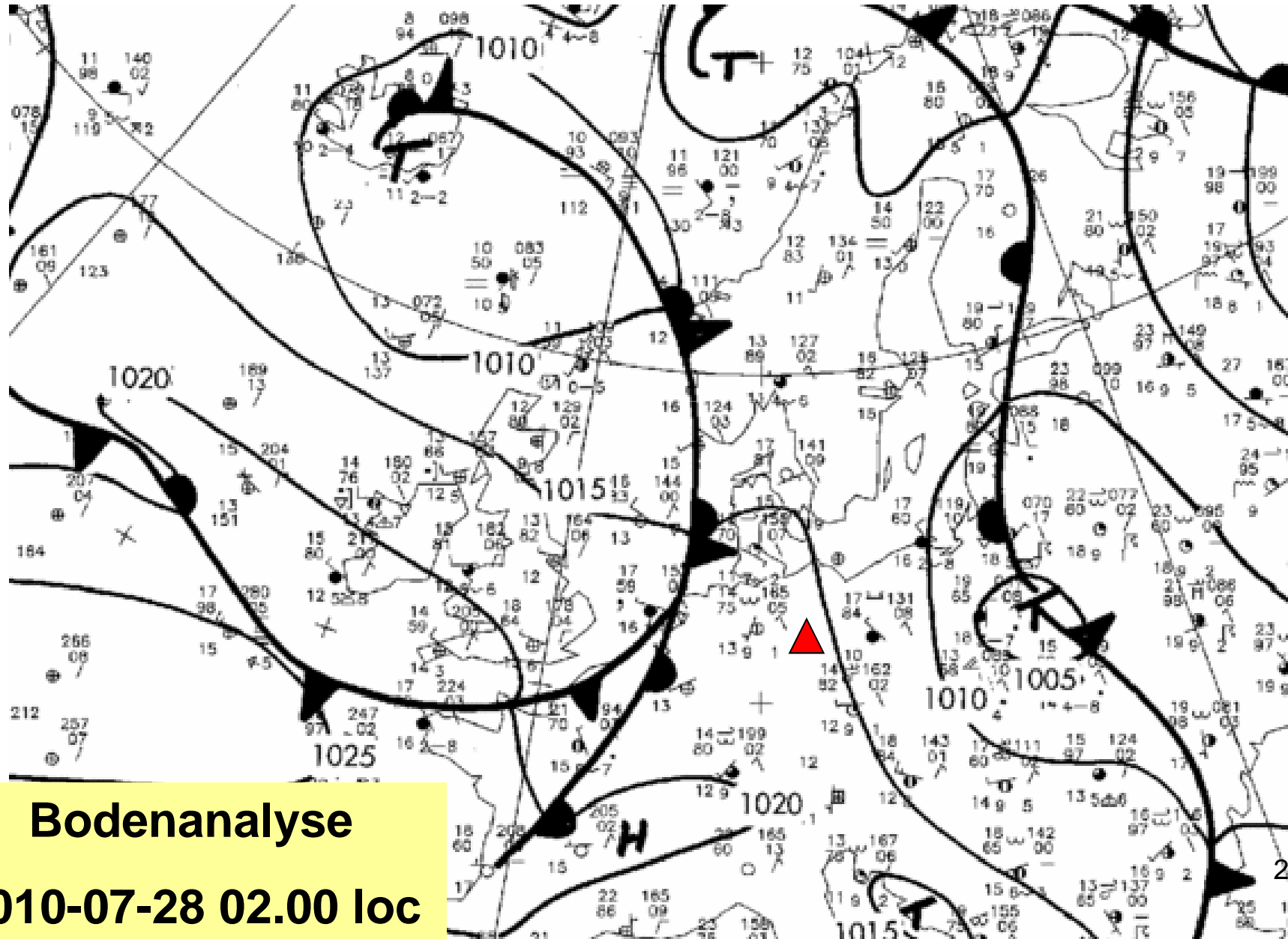
OFFENE-, 18 METER-, DOPPELSITZER - KLASSEN



6. Wetter

Lilienthal Glide 2010

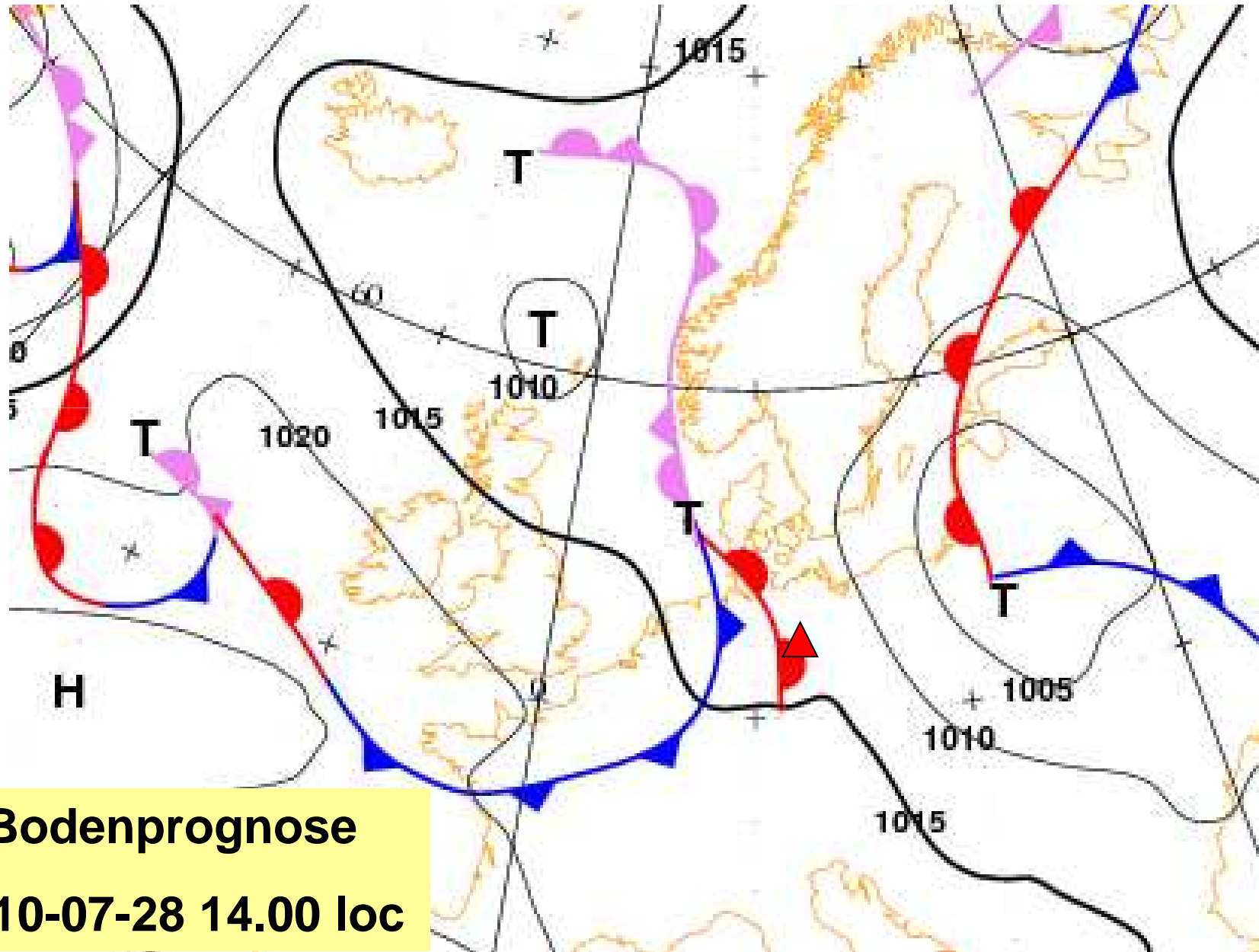
OFFENE-, 18 METER-, DOPPELSITZER - KLASSEN



Bodenanalyse
2010-07-28 02.00 loc

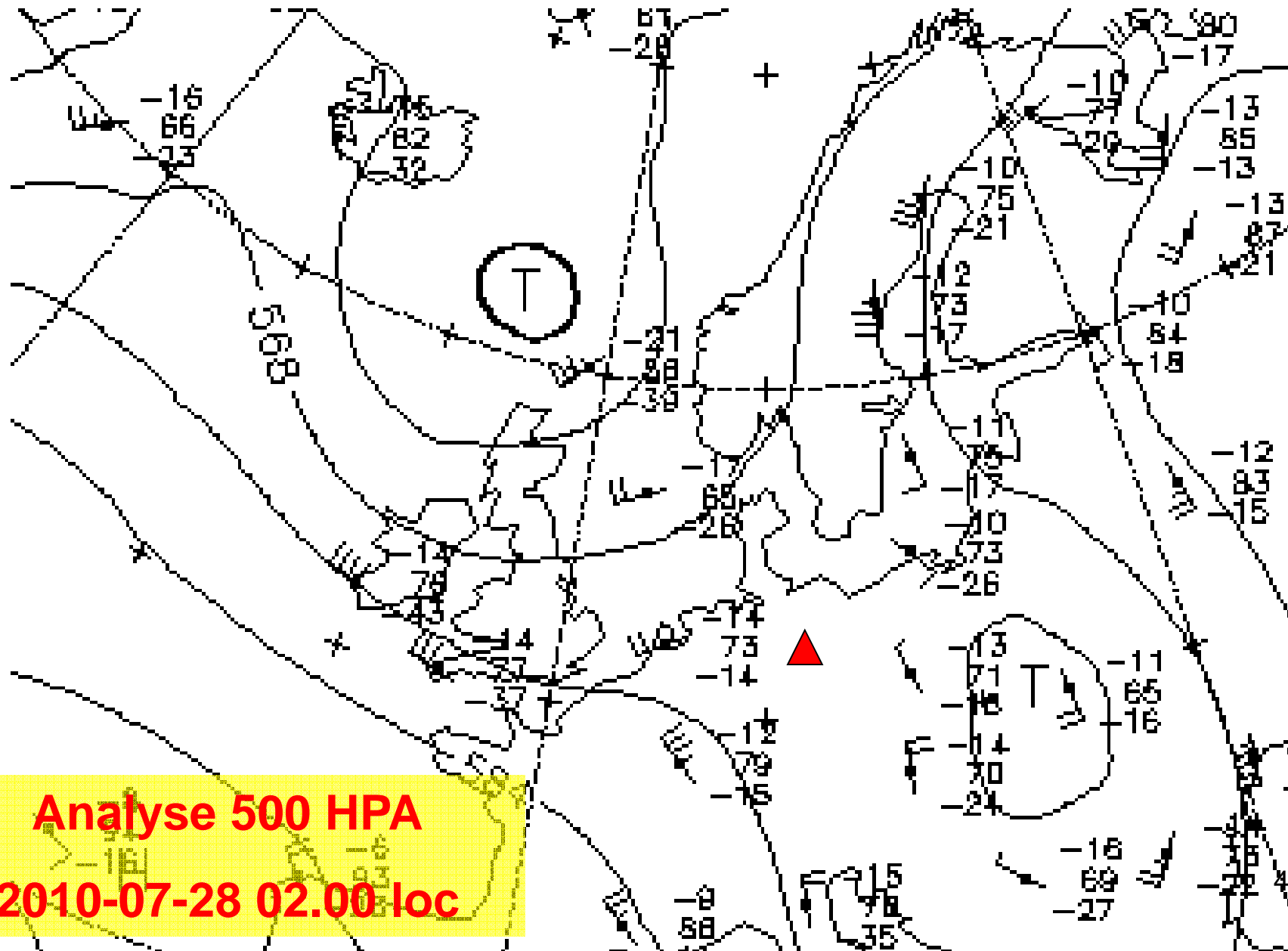
Lilienthal Glide 2010

OFFENE-, 18 METER-, DOPPELSITZER - KLASSEN





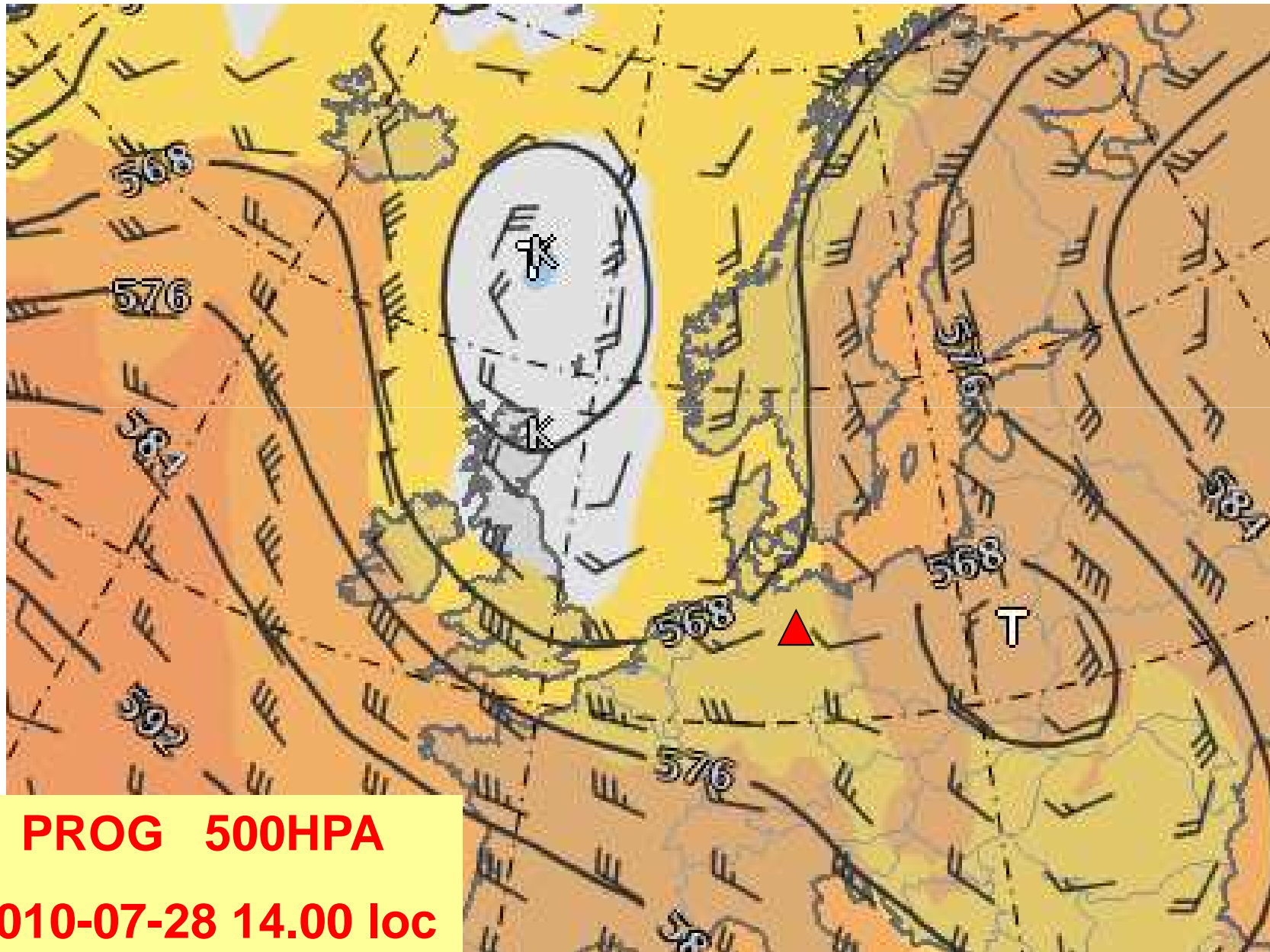
Lilienthal Glide 2010 OFFENE-, 18 METER-, DOPPELSITZER - KLASSEN



Analyse 500 HPA
2010-07-28 02.00 loc

Lilienthal Glide 2010

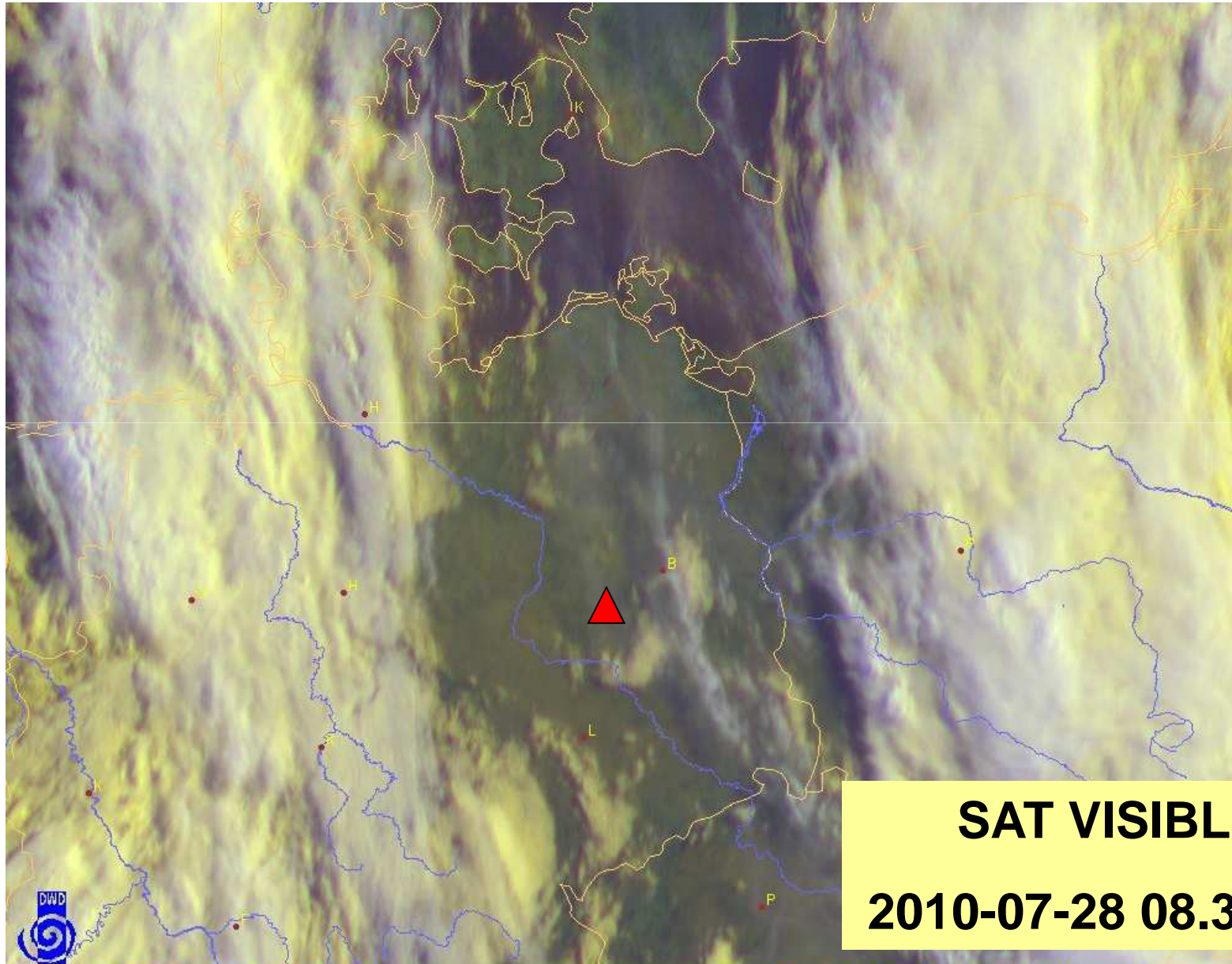
OFFENE-, 18 METER-, DOPPELSITZER - KLASSEN





Lilienthal Glide 2010

OFFENE-, 18 METER-, DOPPELSITZER - KLASSEN



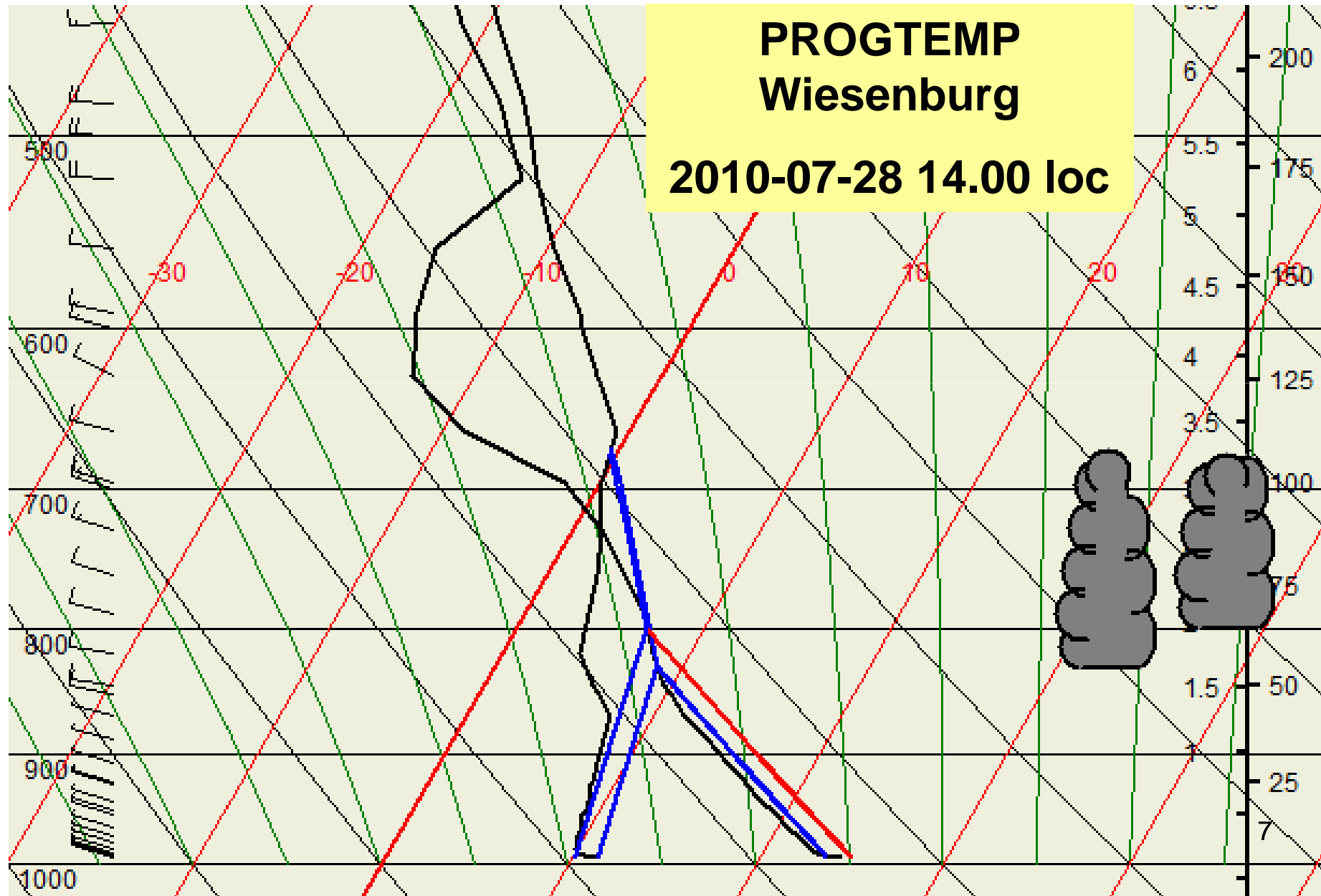
SAT VISIBLE
2010-07-28 08.30 loc



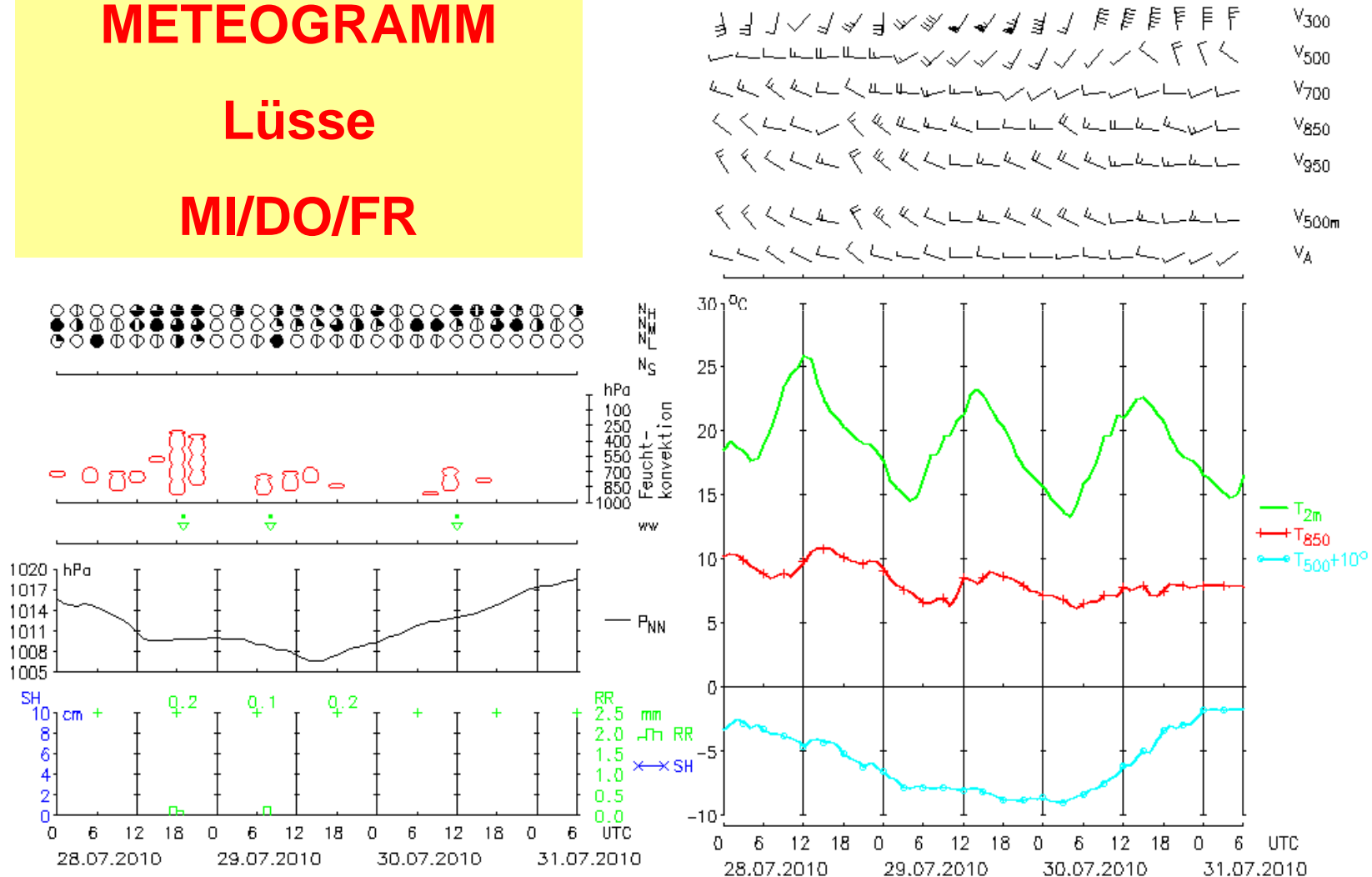


Lilienthal Glide 2010

OFFENE-, 18 METER-, DOPPELSITZER - KLASSEN



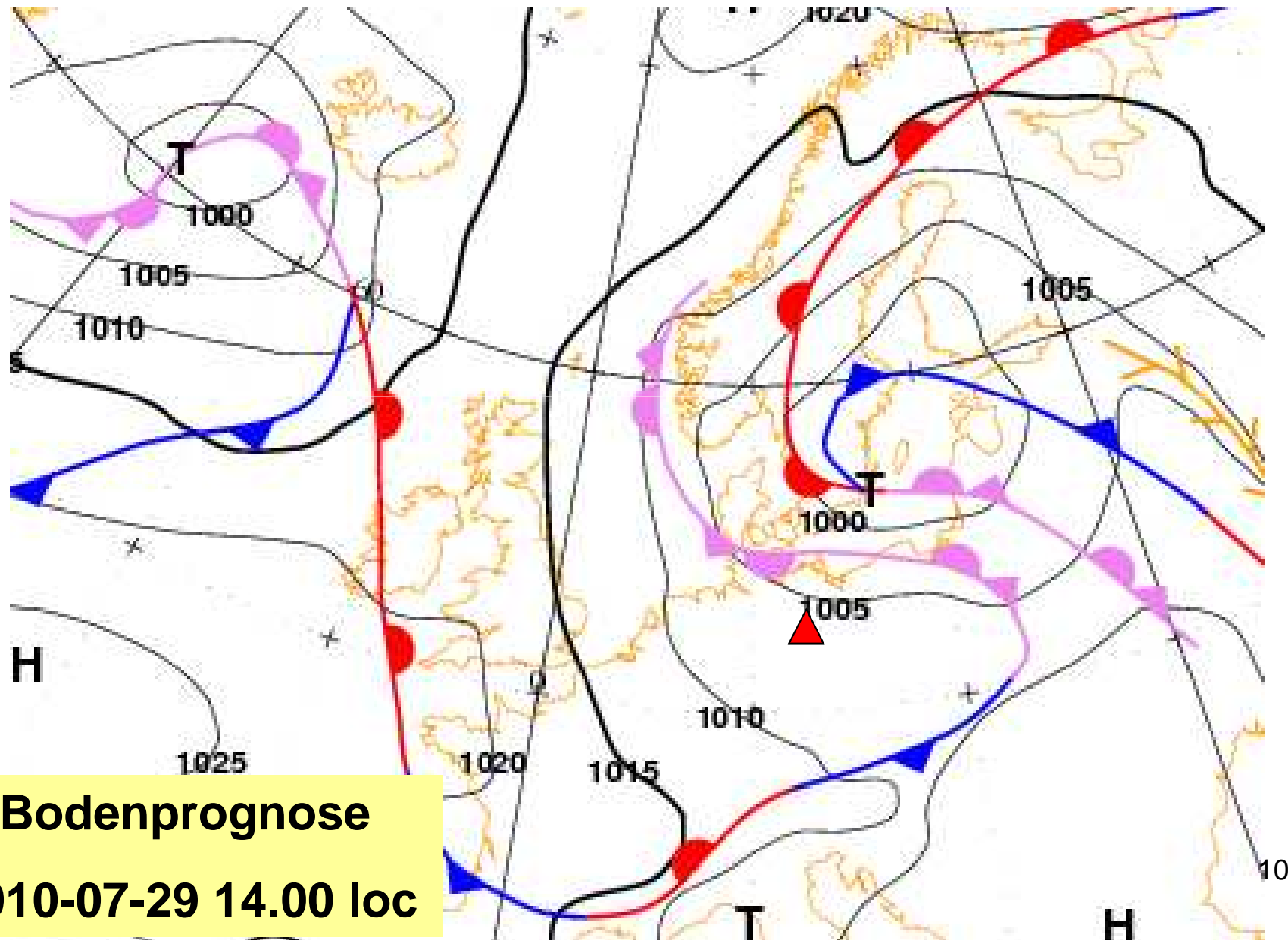
METEOGRAMM
Lüsse
MI/DO/FR



LM Gitterpunkt Lüsse LAM= 12.6E, PHI= 52.2N H= 55m

Lilienthal Glide 2010

OFFENE-, 18 METER-, DOPPELSITZER - KLASSEN



Bodenprognose
2010-07-29 14.00 loc