



Lilienthal Glide 2010

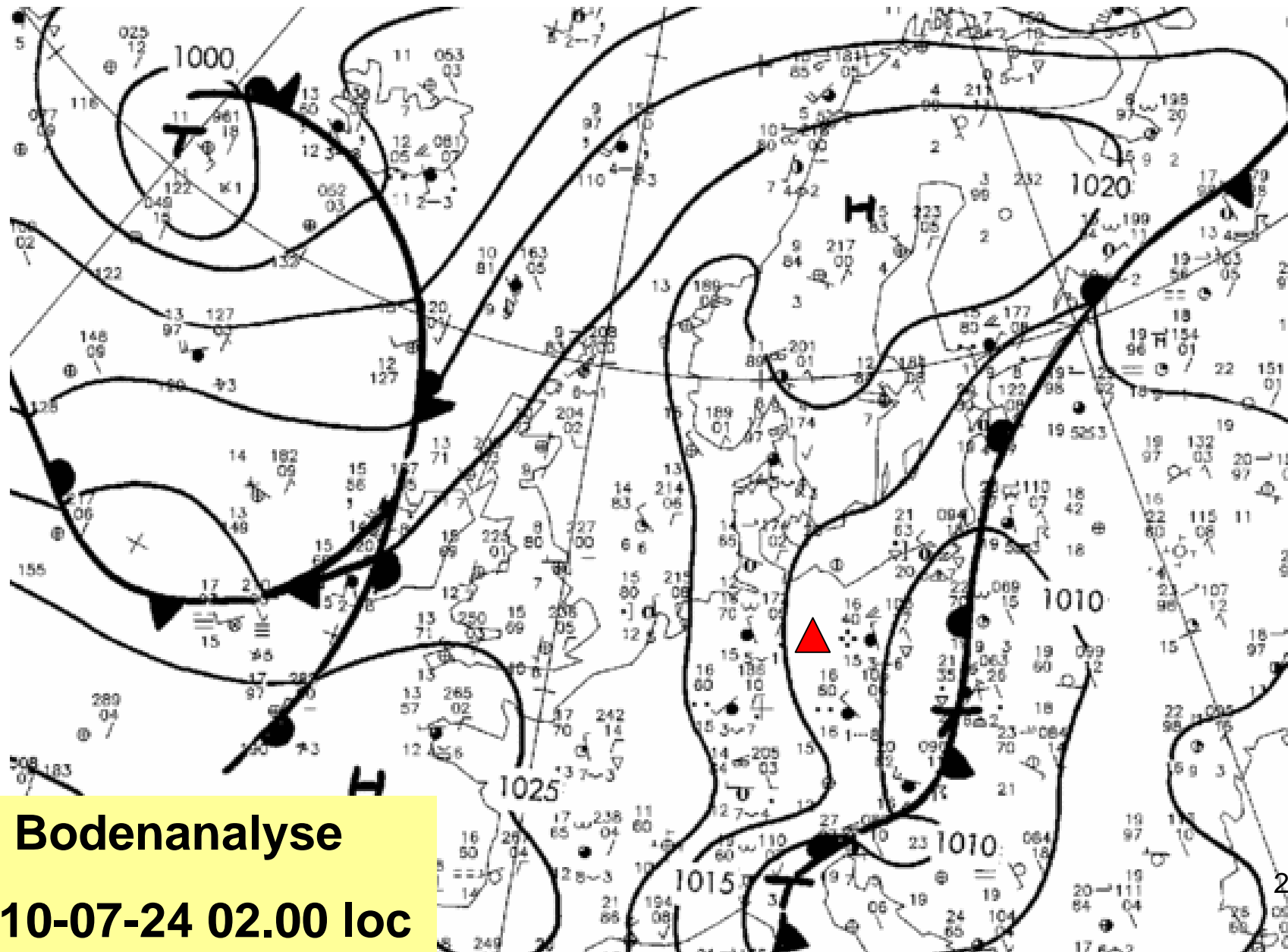
OFFENE-, 18 METER-, DOPPELSITZER - KLASSEN



6. Wetter

Lilienthal Glide 2010

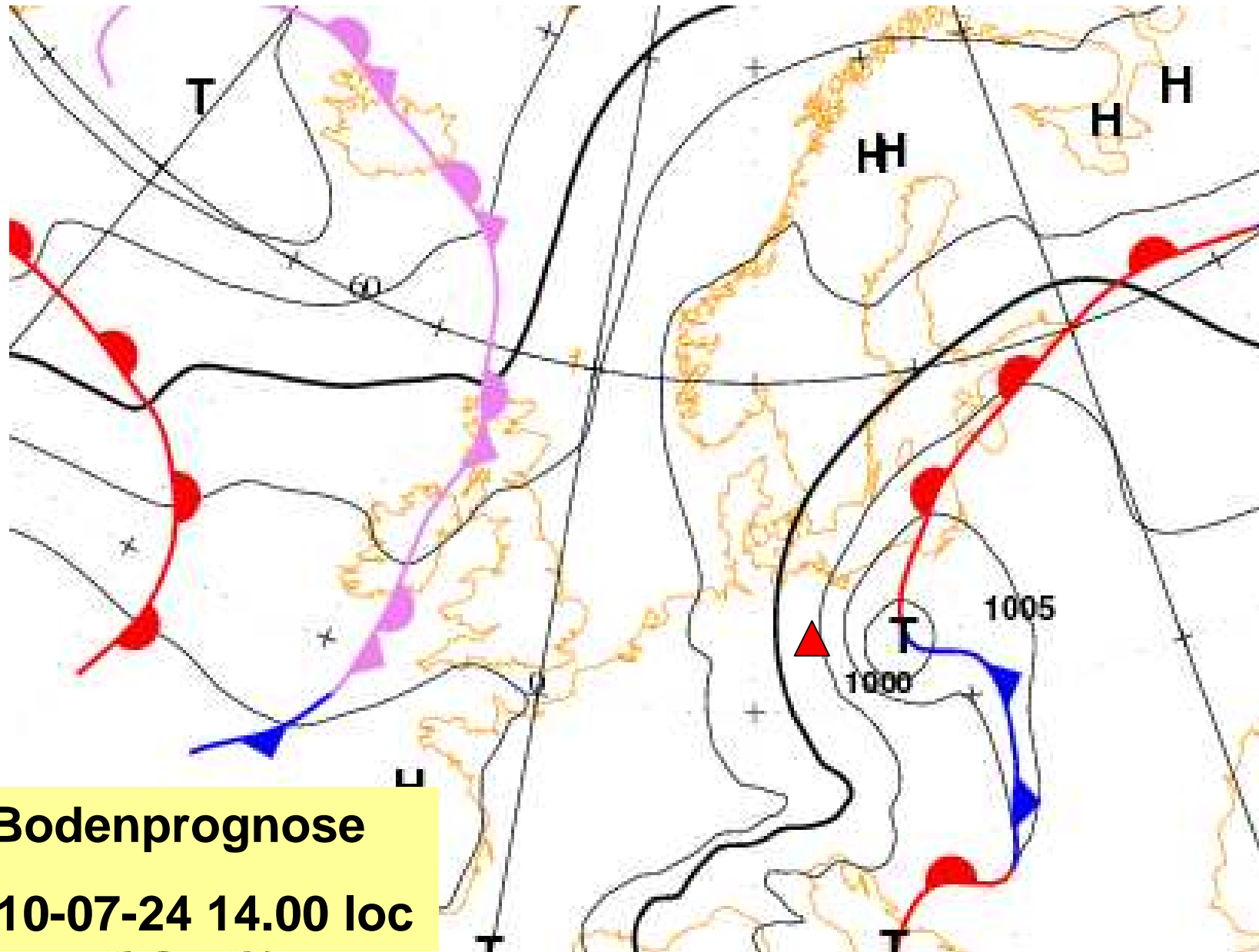
OFFENE-, 18 METER-, DOPPELSITZER - KLASSEN



Bodenanalyse
2010-07-24 02.00 loc

Lilienthal Glide 2010

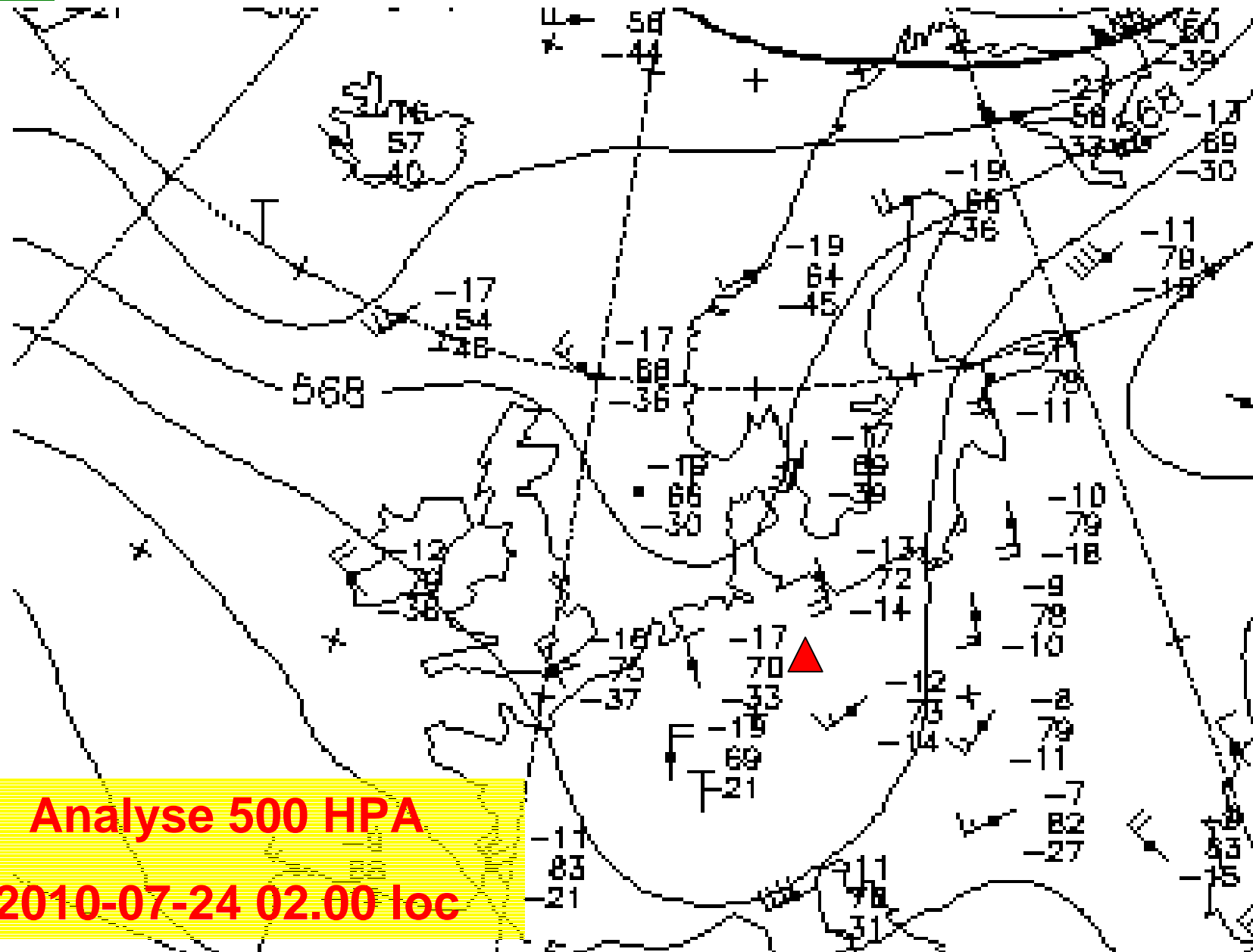
OFFENE-, 18 METER-, DOPPELSITZER - KLASSEN



Bodenprognose
2010-07-24 14.00 loc

Lilienthal Glide 2010

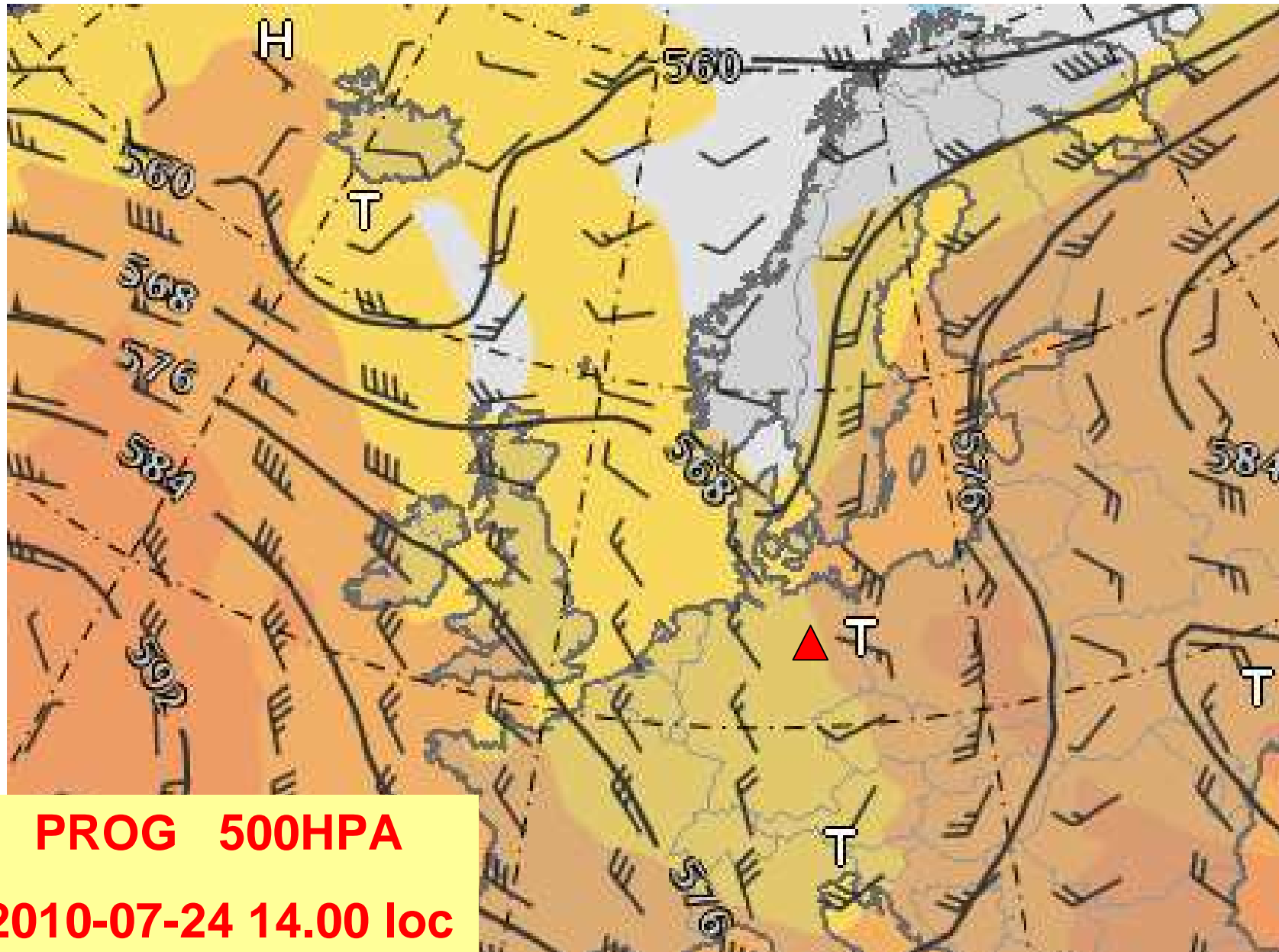
OFFENE-, 18 METER-, DOPPELSITZER - KLASSEN



Analyse 500 HPA
2010-07-24 02.00 loc

Lilienthal Glide 2010

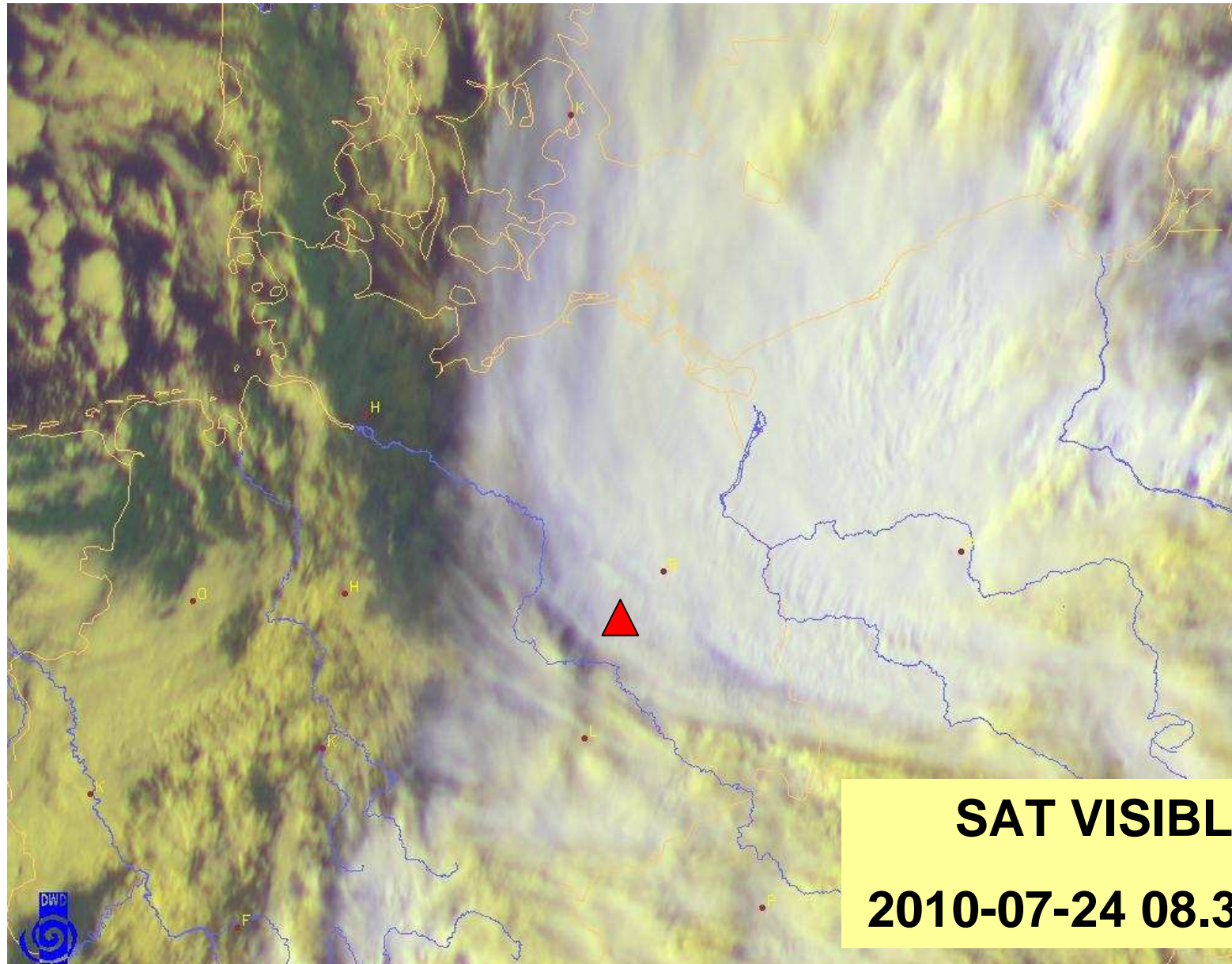
OFFENE-, 18 METER-, DOPPELSITZER - KLASSEN





Lilienthal Glide 2010

OFFENE-, 18 METER-, DOPPELSITZER - KLASSEN

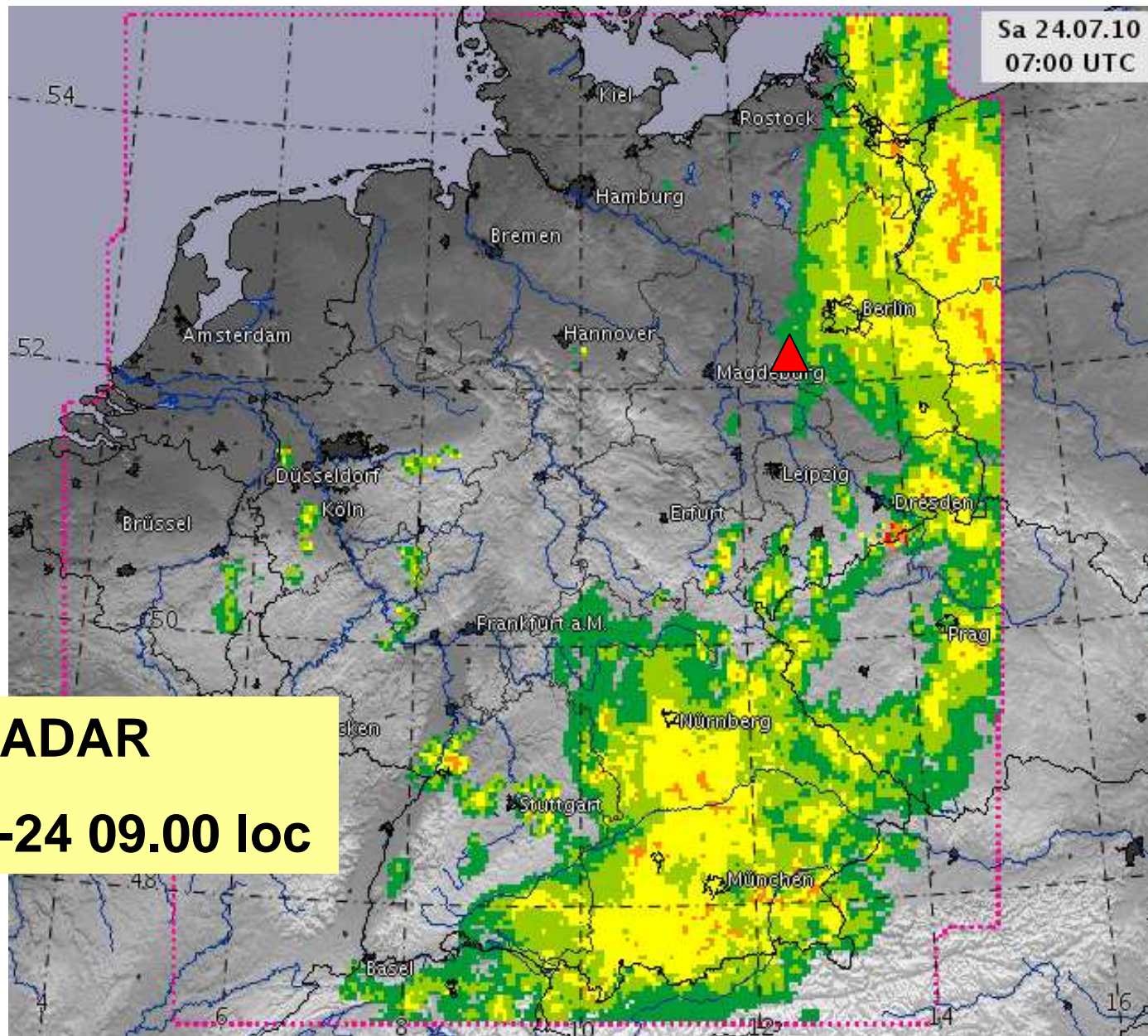


SAT VISIBLE
2010-07-24 08.30 loc



Lilienthal Glide 2010

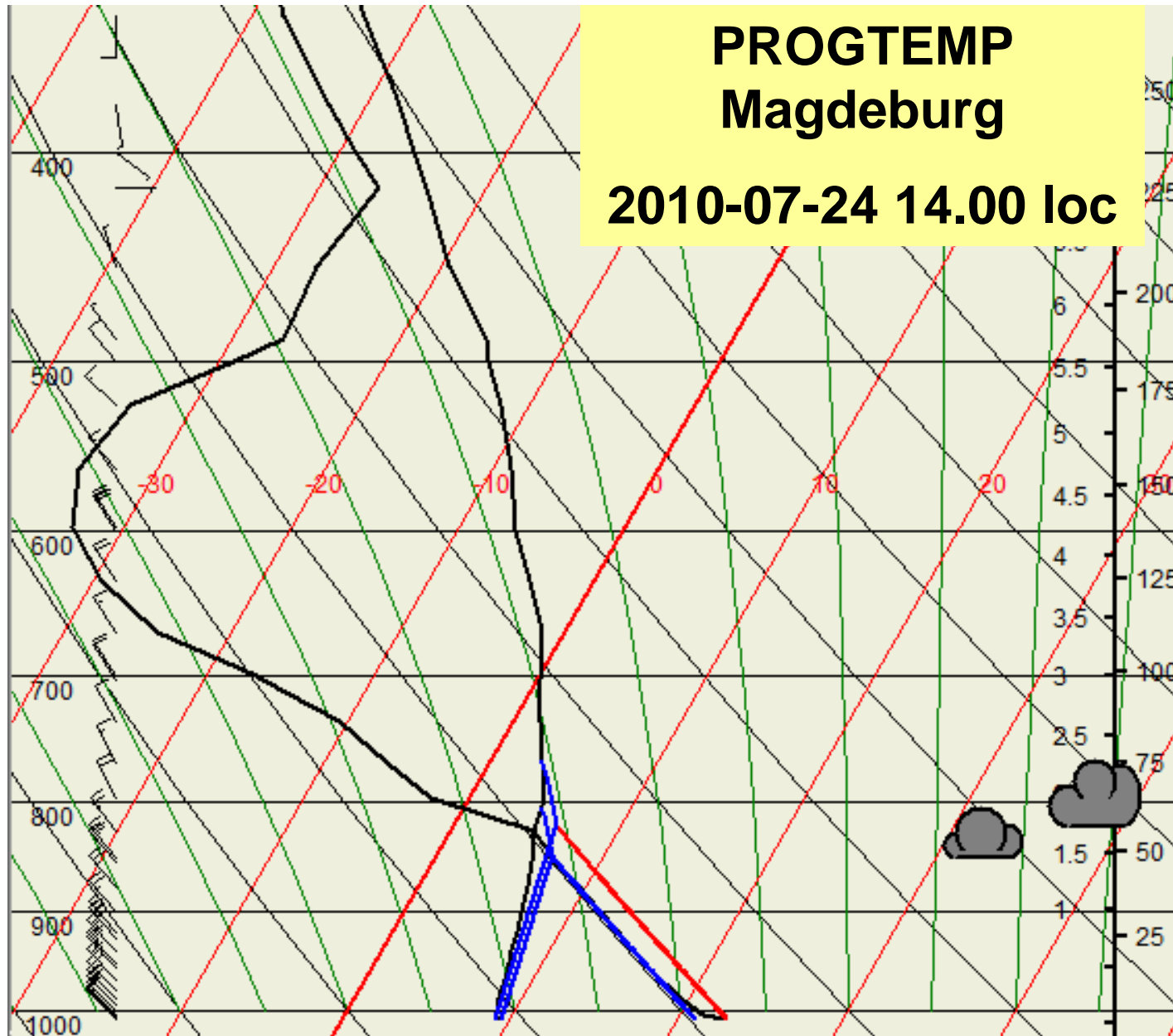
OFFENE-, 18 METER-, DOPPELSITZER - KLASSEN



RADAR
2010-07-24 09.00 loc

Lilienthal Glide 2010

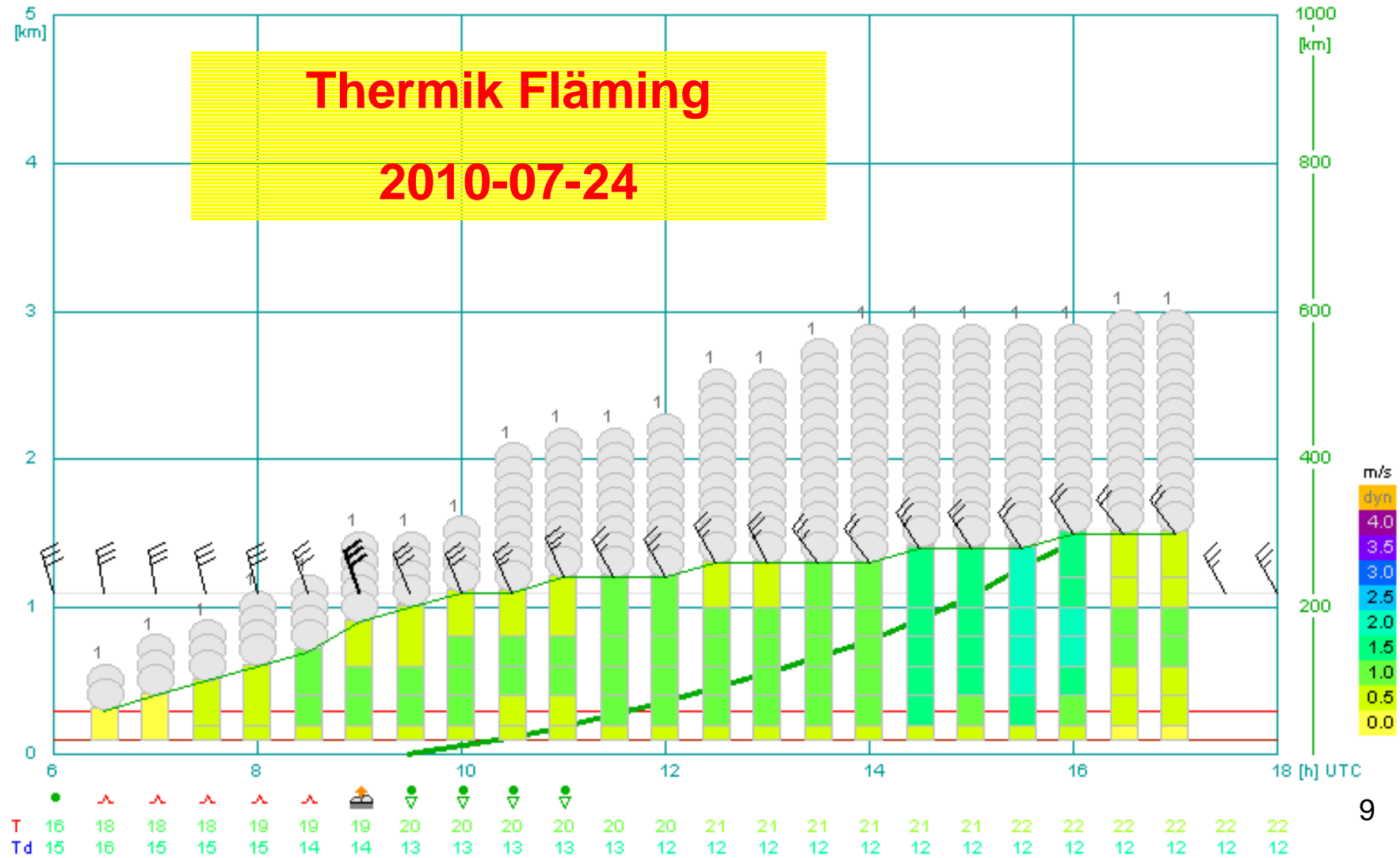
OFFENE-, 18 METER-, DOPPELSITZER - KLASSEN



Lilienthal Glide 2010

OFFENE-, 18 METER-, DOPPELSITZER - KLASSEN

H	7	7	7	7	7	7	7	7	7	7	7	7	7	6	6	6	6	6	6	6	6	6	7	7	7	7
M	7	7	7	7	7	7	7	7	6	6	5	5	4	4	4	4	4	4	1	1	2	2	2	2	2	
L																										





Lilienthal Glide 2010

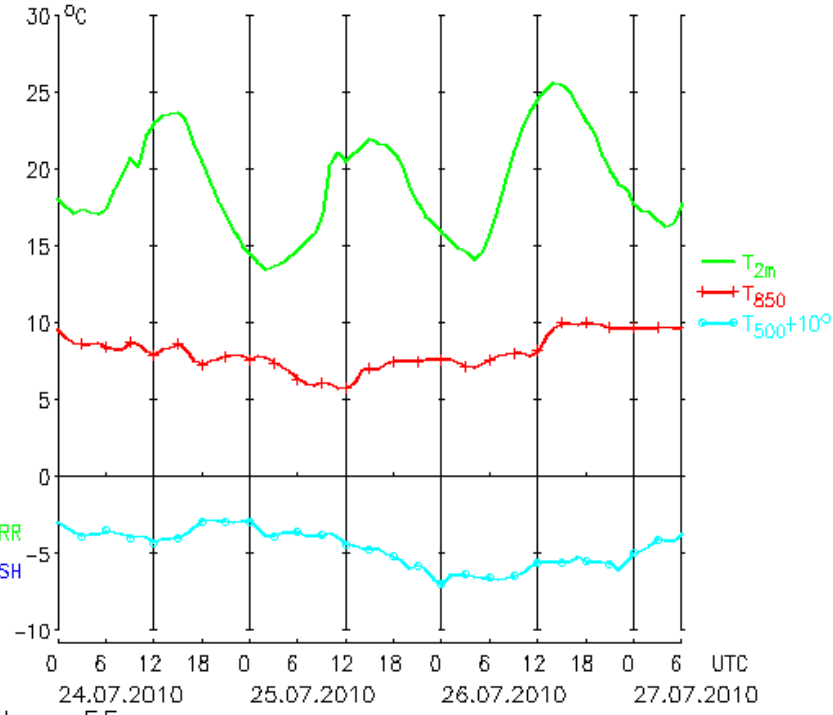
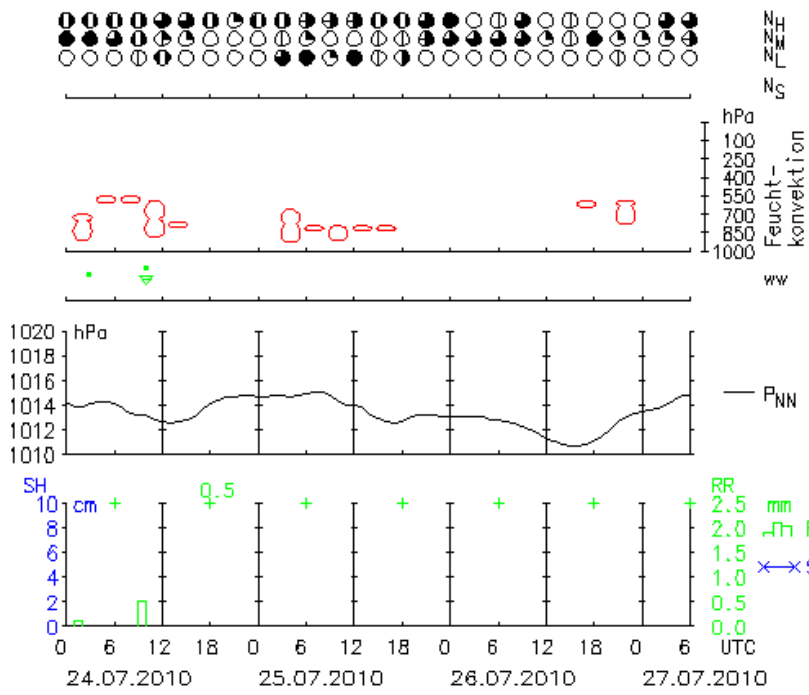
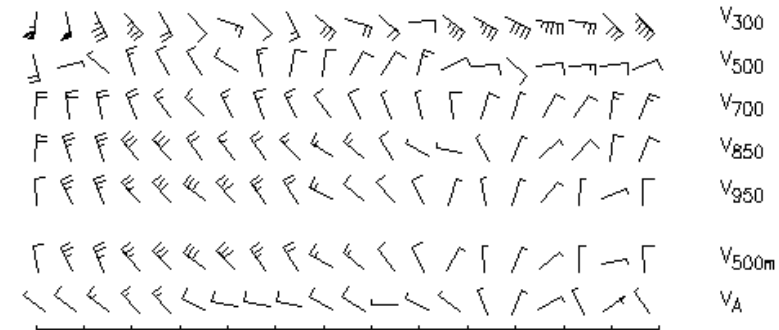
OFFENE-, 18 METER-, DOPPELSITZER - KLASSEN



METEOGRAMM

Lüsse

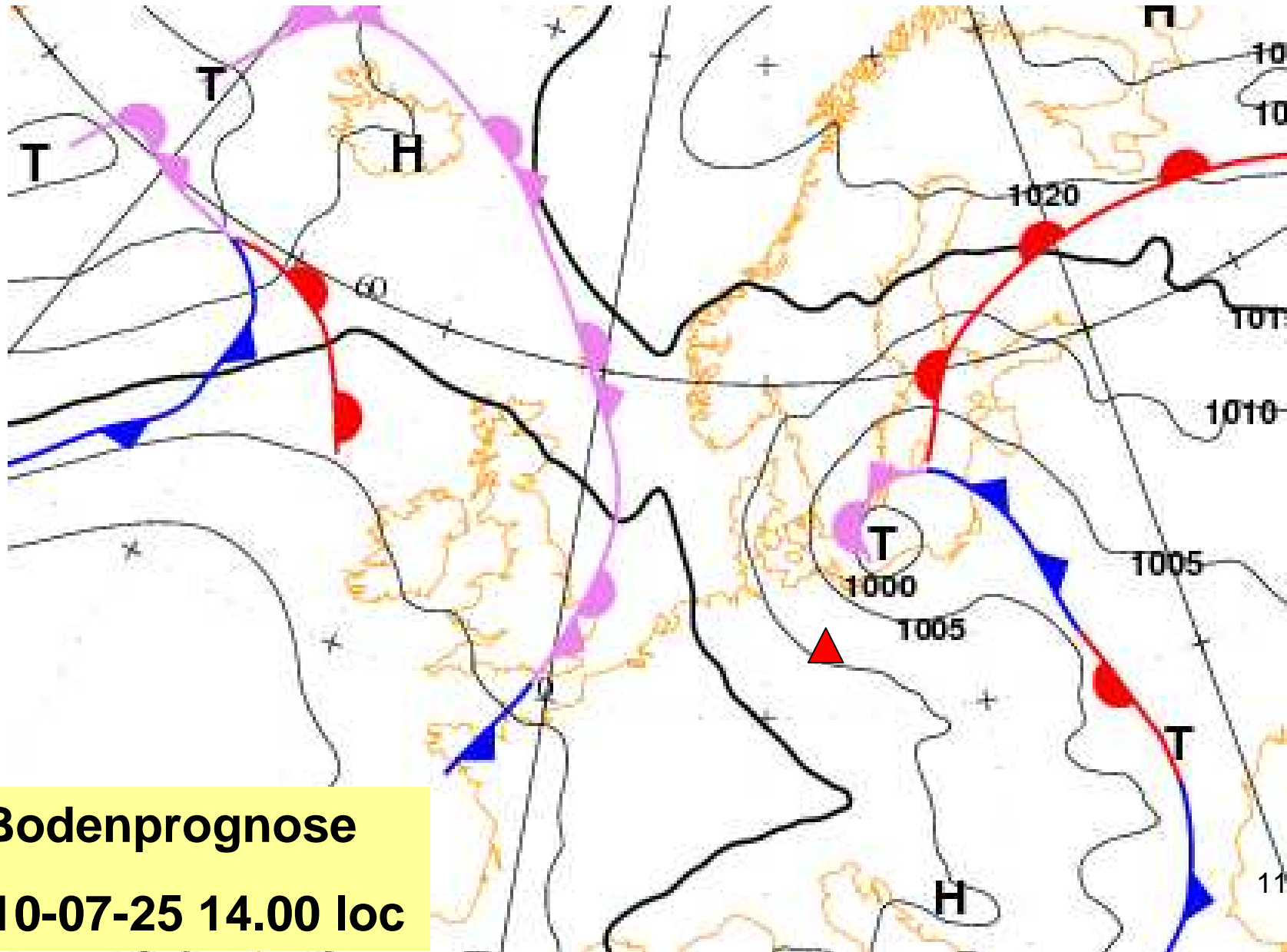
SA/ SO / MO



LM Gitterpunkt Lüsse LAM= 12.6E, PHI= 52.2N H= 55m

Lilienthal Glide 2010

OFFENE-, 18 METER-, DOPPELSITZER - KLASSEN



Bodenprognose
2010-07-25 14.00 loc