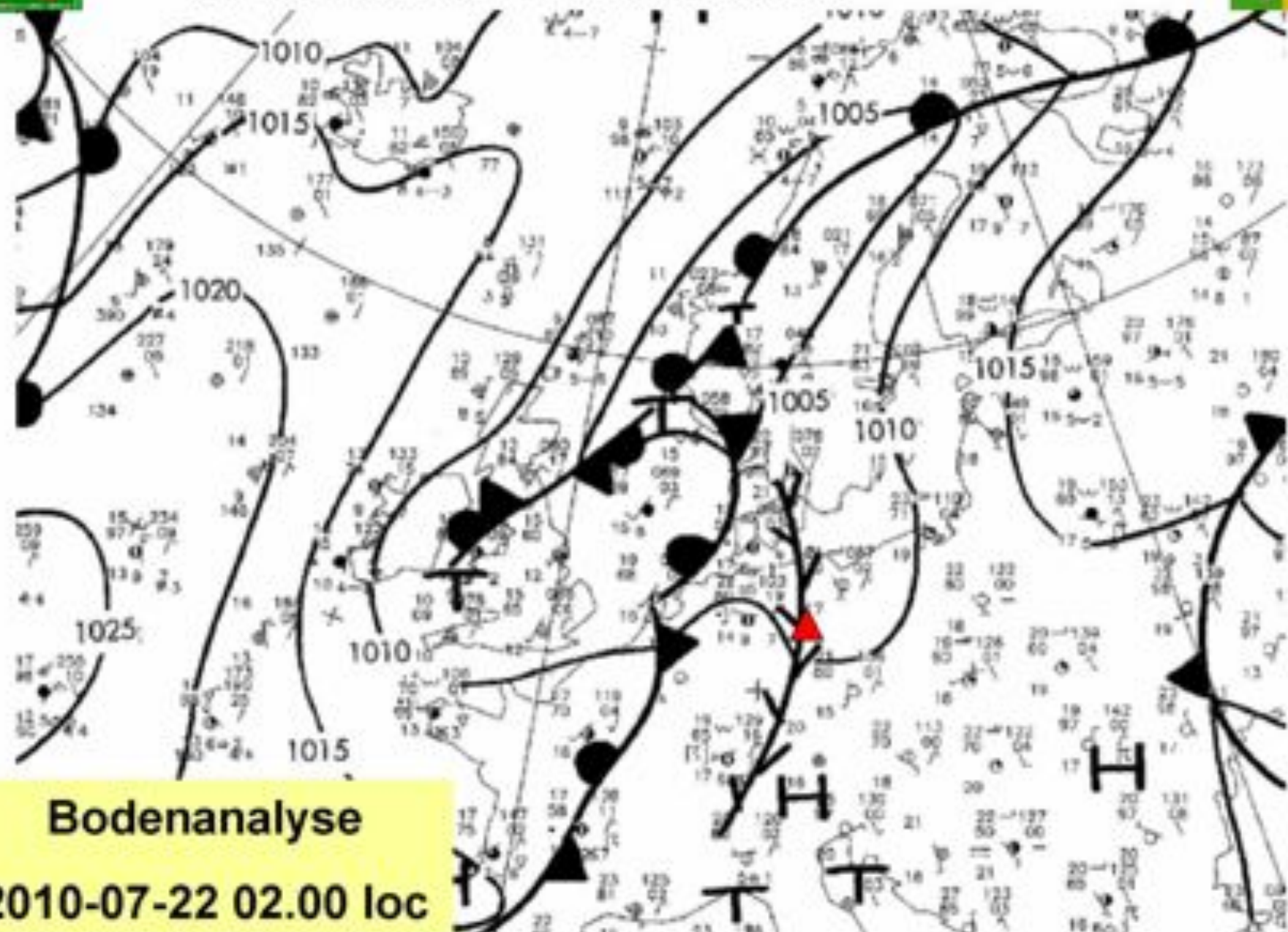




6. Wetter

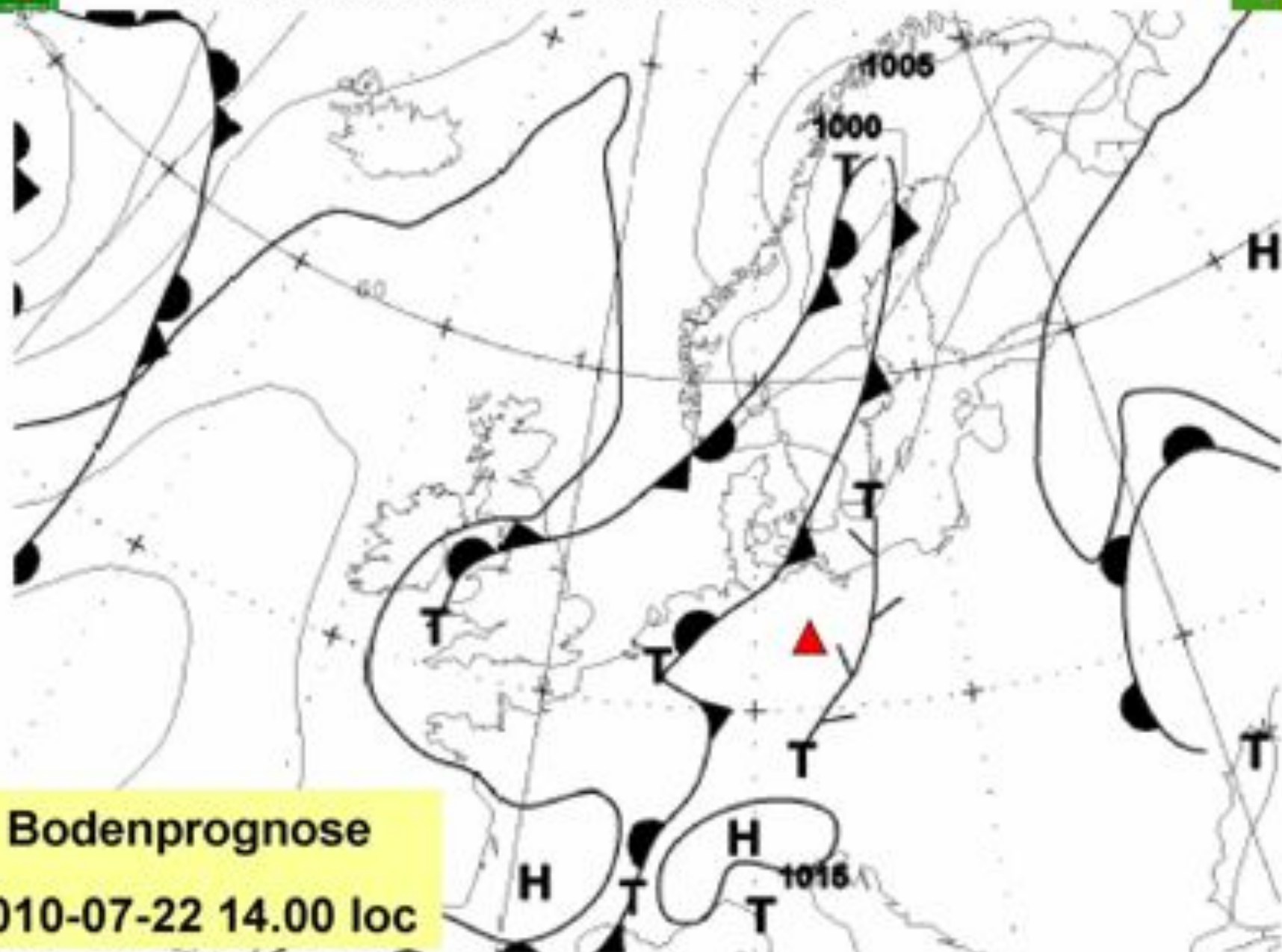
Lilienthal Glide 2010
OFFENE-, 18 METER-, DOPPELSITZER - KLASSEN



Bodenanalyse

2010-07-22 02.00 loc

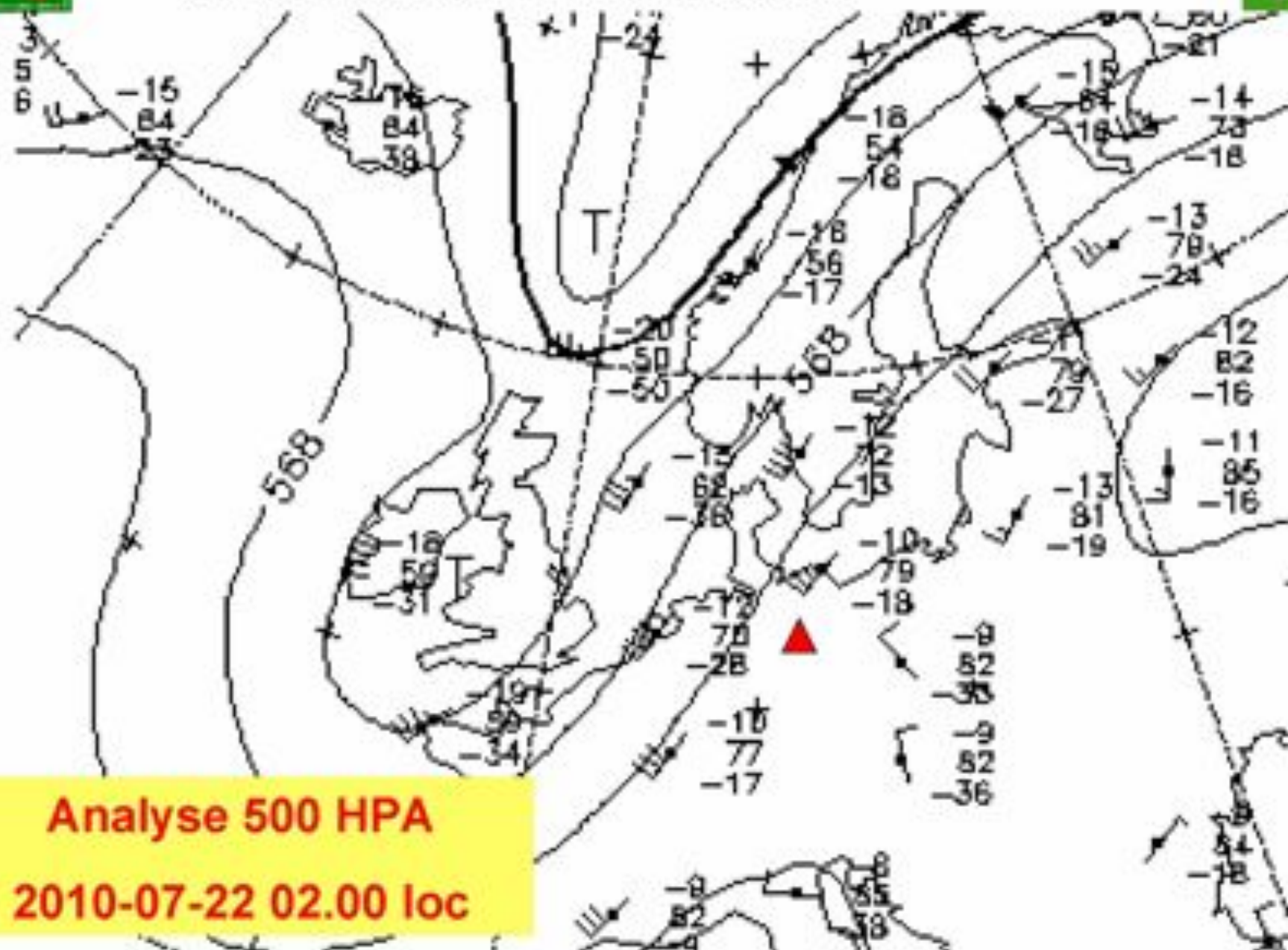
Lilienthal Glide 2010
OFFENE-, 18 METER-, DOPPELSITZER - KLASSEN



Bodenprognose

2010-07-22 14.00 loc

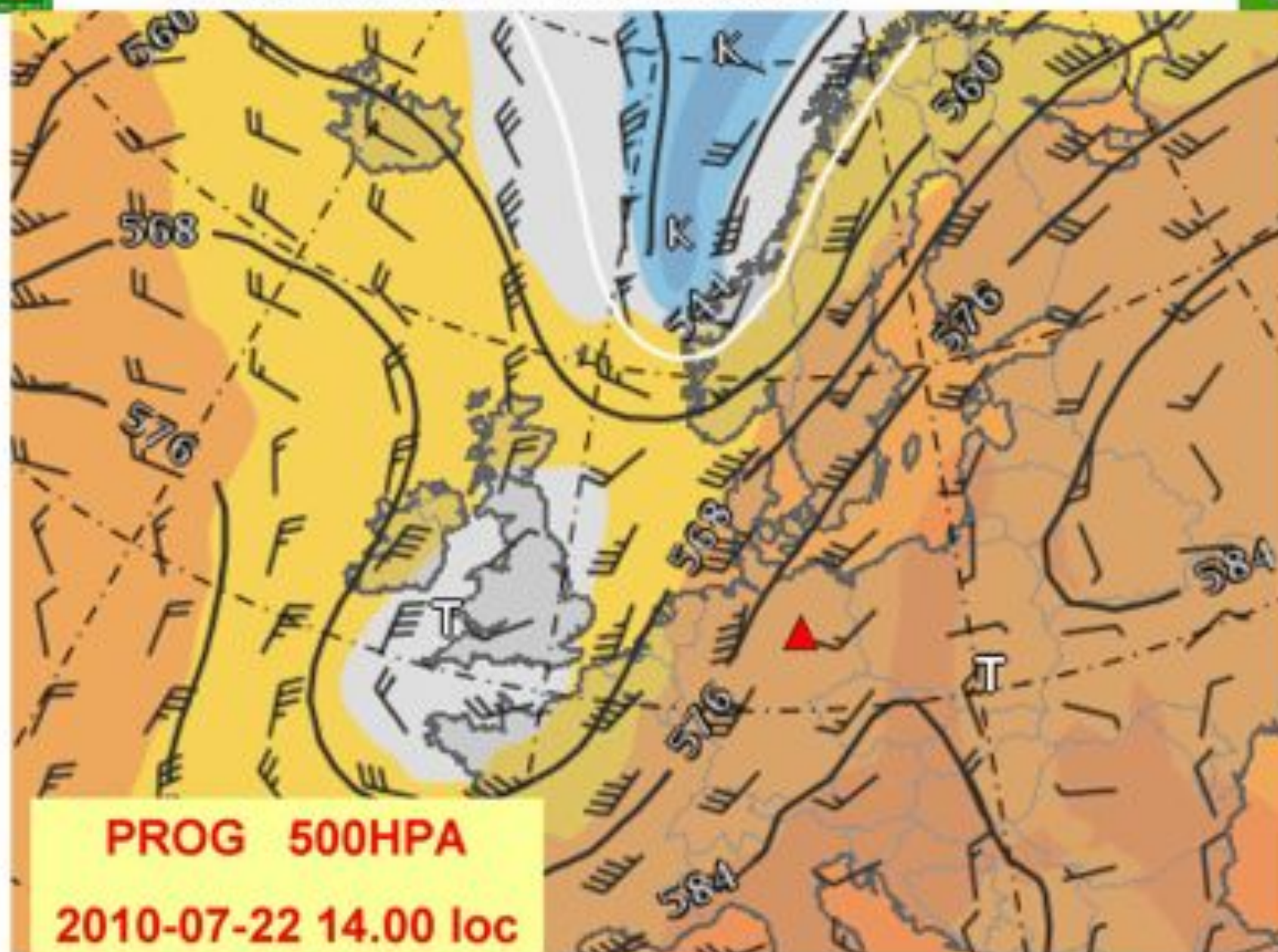
Lilienthal Glide 2010
OFFENE-, 18 METER-, DOPPELSITZER - KLASSEN



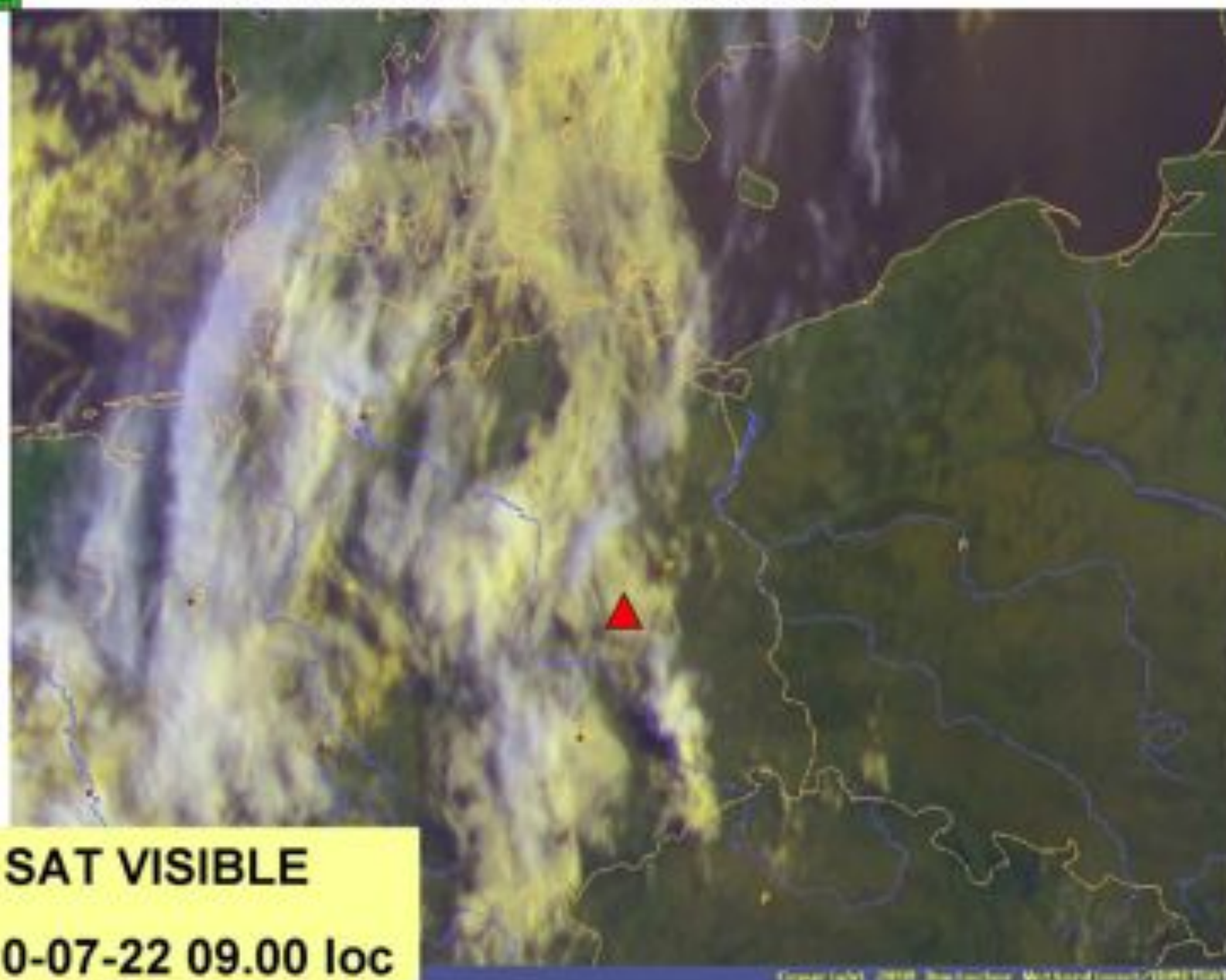
Analyse 500 HPA

2010-07-22 02.00 loc

Lilienthal Glide 2010
OFFENE-, 18 METER-, DOPPELSITZER - KLASSEN



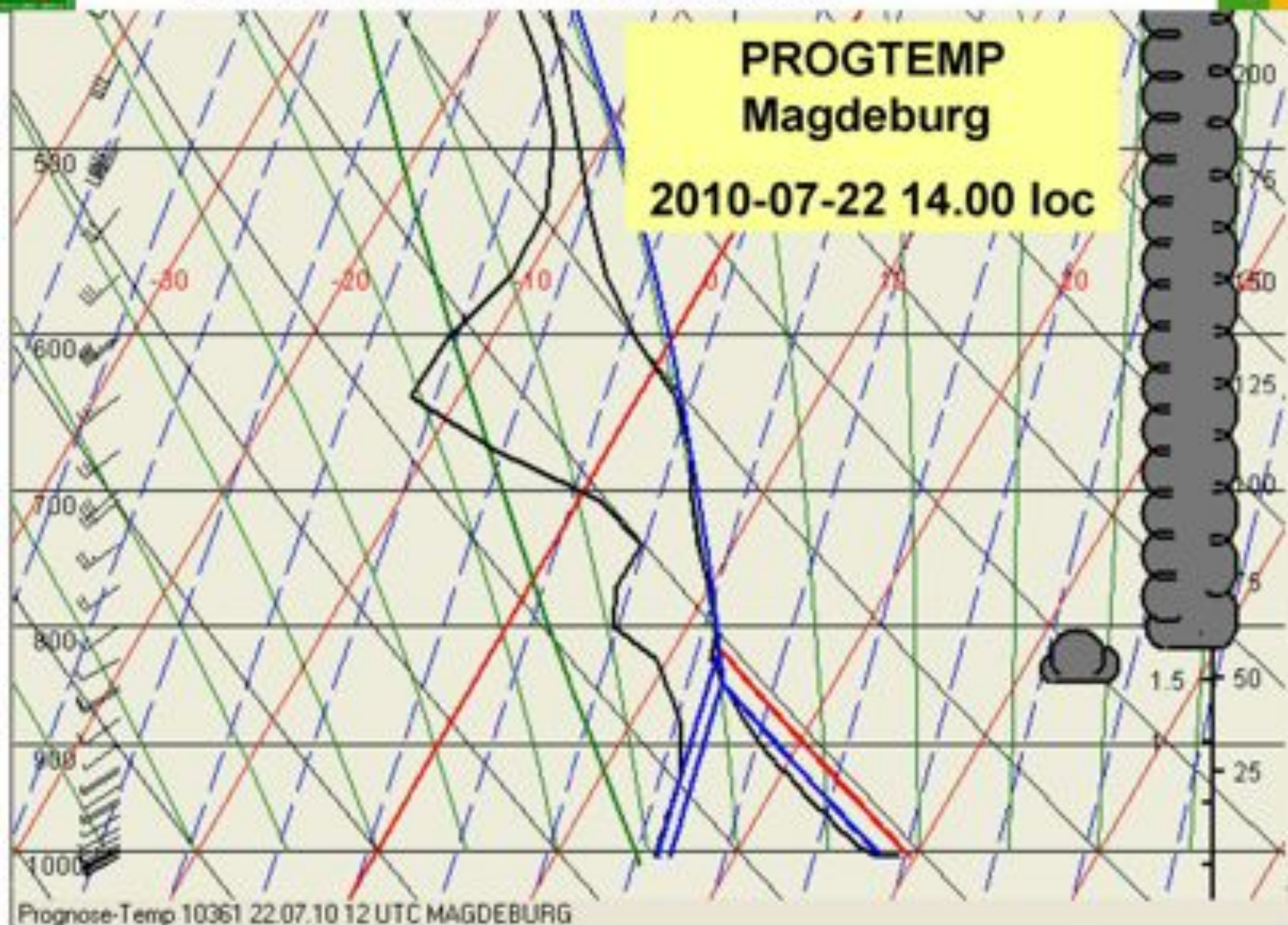
Lilienthal Glide 2010
OFFENE-, 18 METER-, DOPPELSITZER - KLASSEN

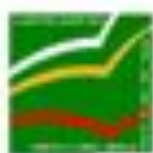


SAT VISIBLE

2010-07-22 09.00 loc

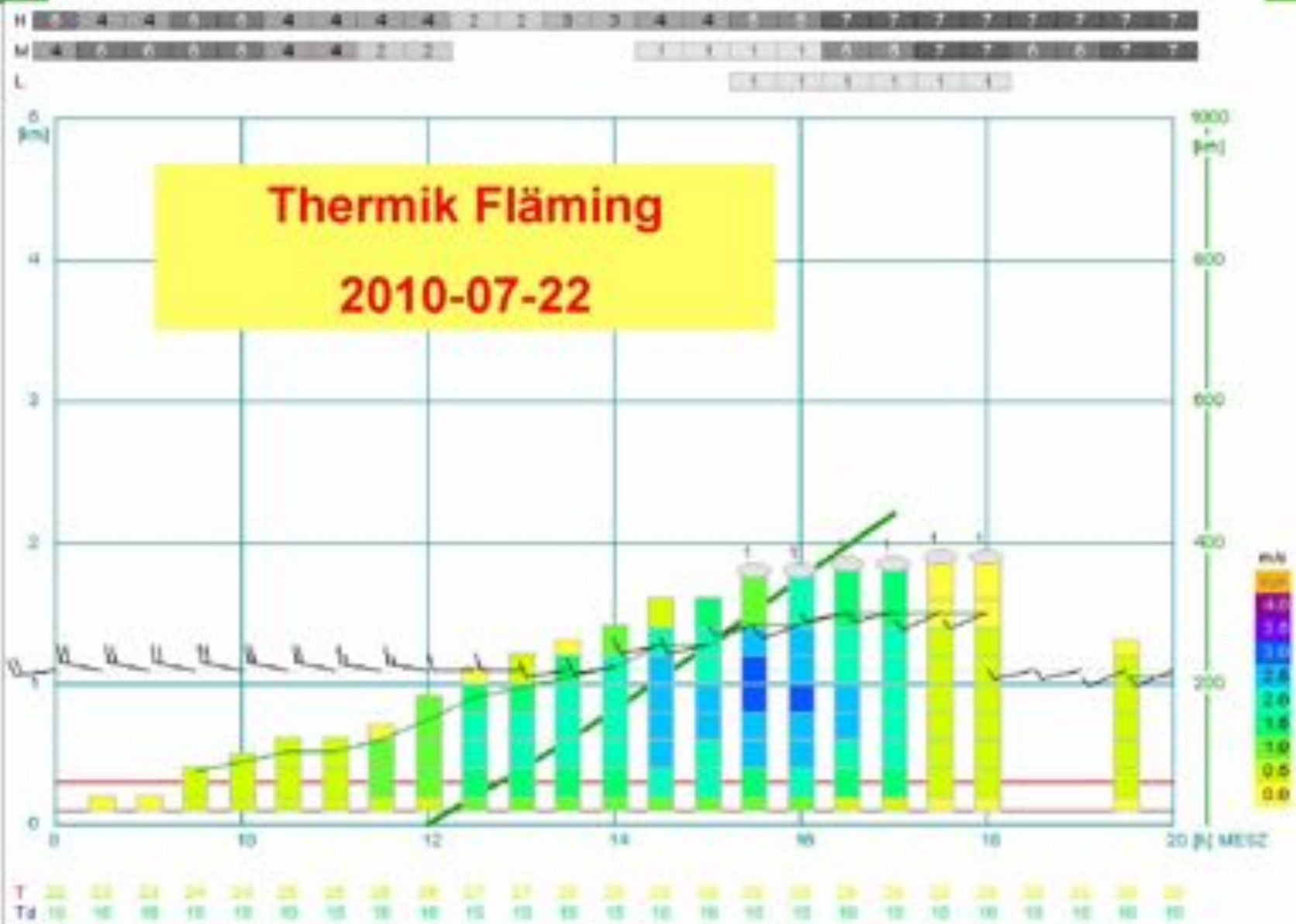
Lilienthal Glide 2010
OFFENE-, 18 METER-, DOPPELSITZER - KLASSEN





Lilienthal Glide 2010

OFFENE-, 18 METER-, DOPPELSITZER - KLASSEN



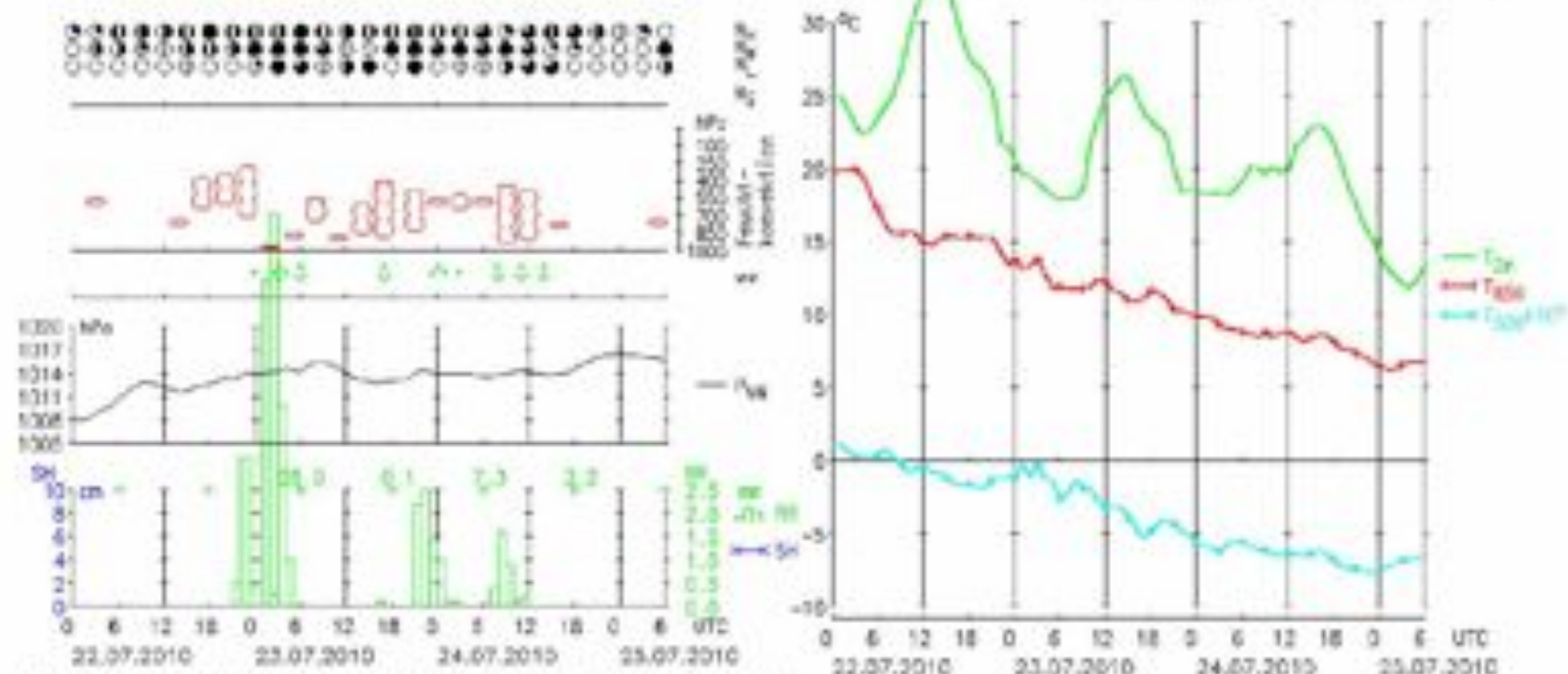
[LM 03z-18z, WMO 0/7 06z]



METEOGRAMM

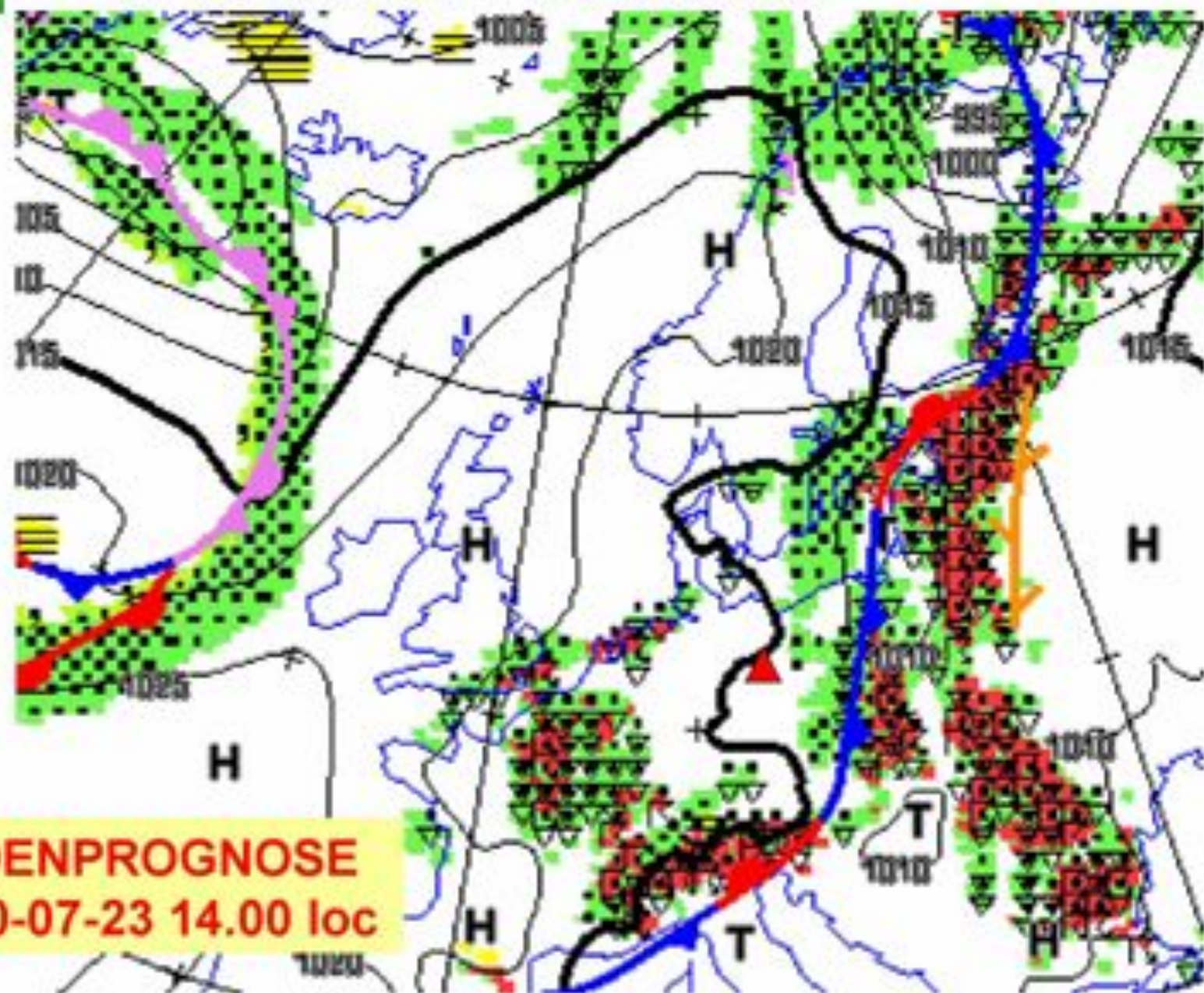
Lüsse

DO / FR / SA



LM Gitterpunkt Lüsse LAM= 12.6E, PHI= 52.2N H= 55m

Lilienthal Glide 2010
OFFENE-, 18 METER-, DOPPELSITZER - KLASSEN



BODENPROGNOSE
2010-07-23 14.00 loc