

Lilienthal Glide 2010

OFFENE-, 18 METER-, DOPPELSITZER - KLASSEN

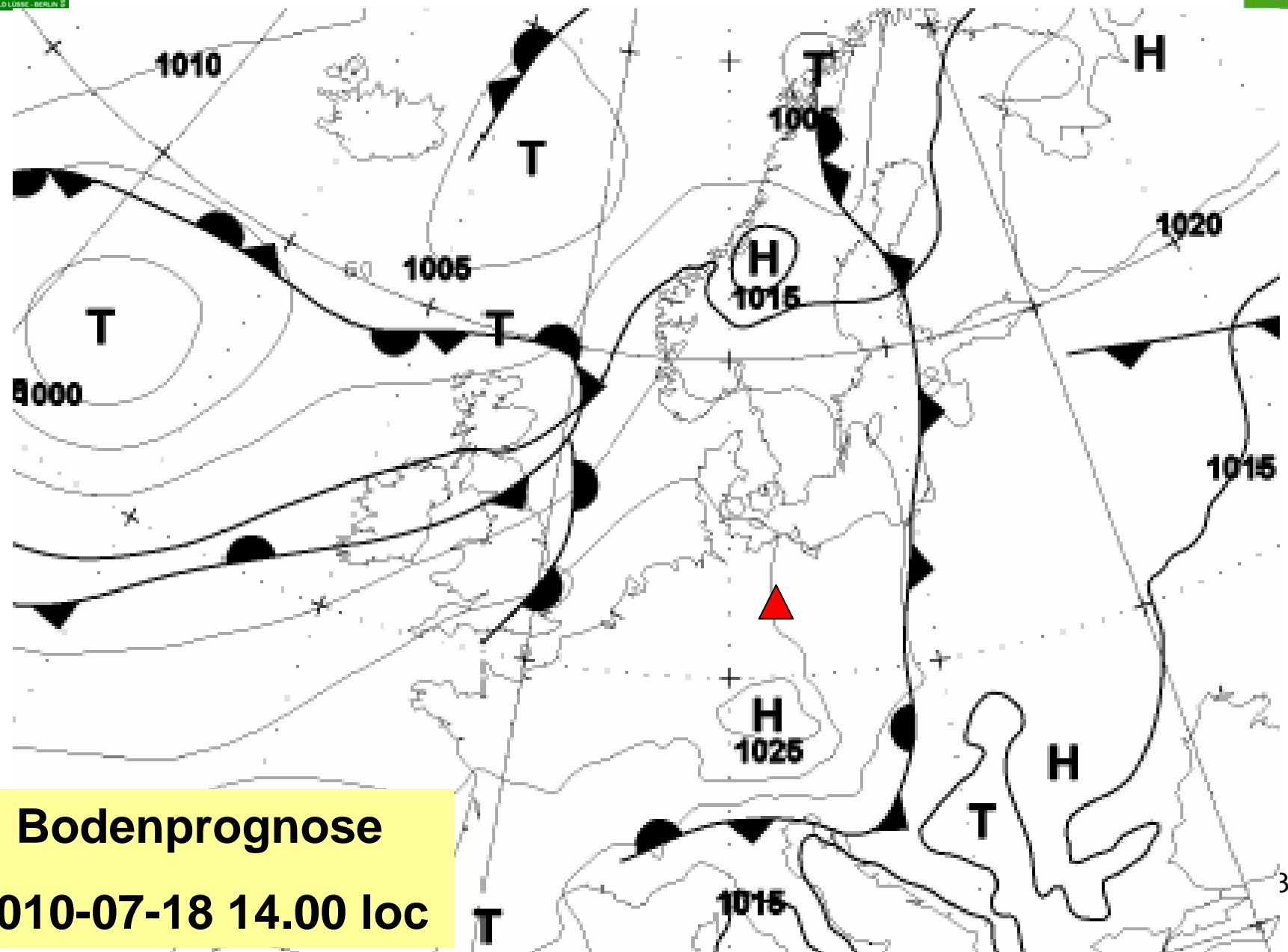


6. Wetter



Lilienthal Glide 2010

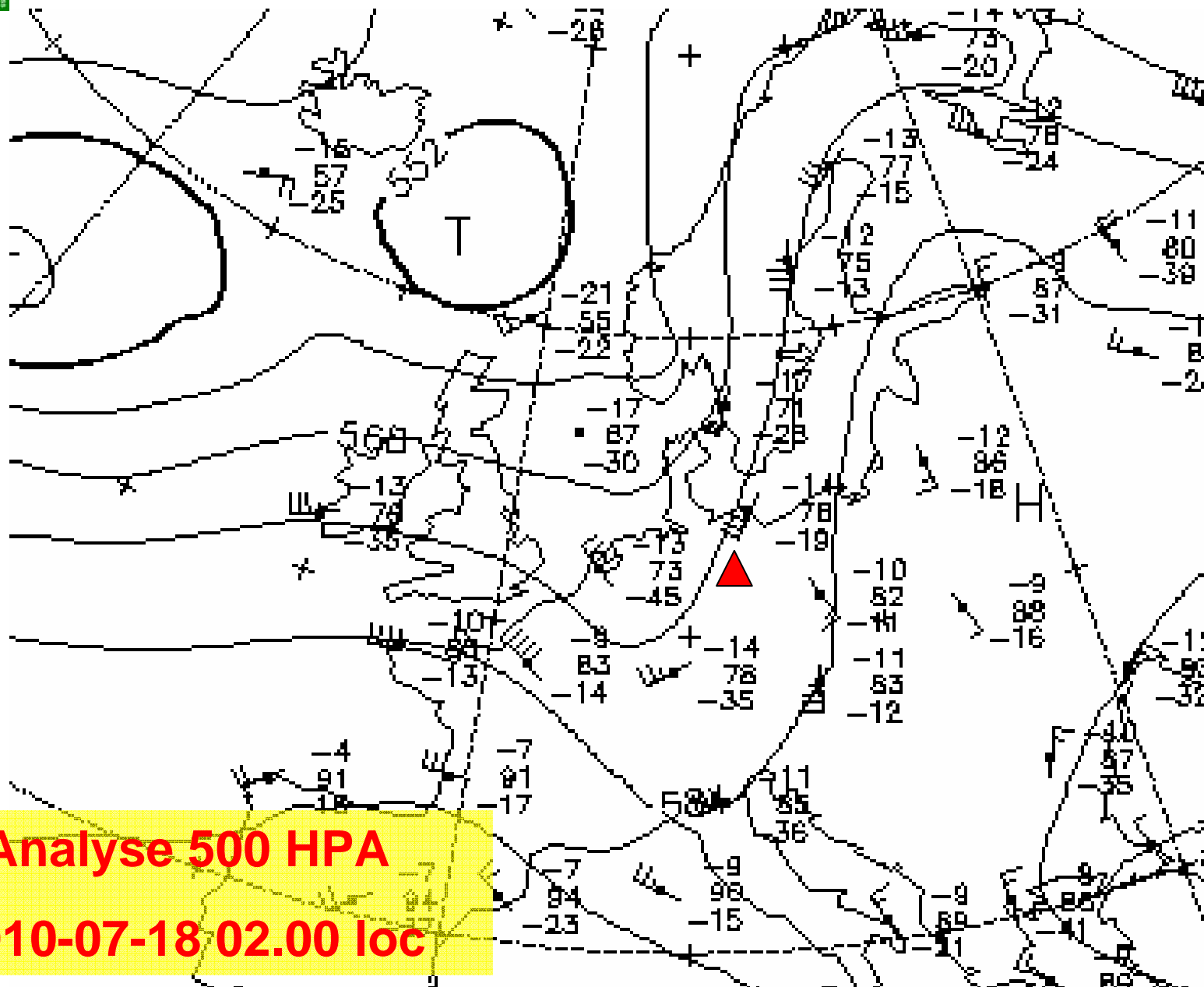
OFFENE-, 18 METER-, DOPPELSITZER - KLASSEN



Bodenprognose
2010-07-18 14.00 loc

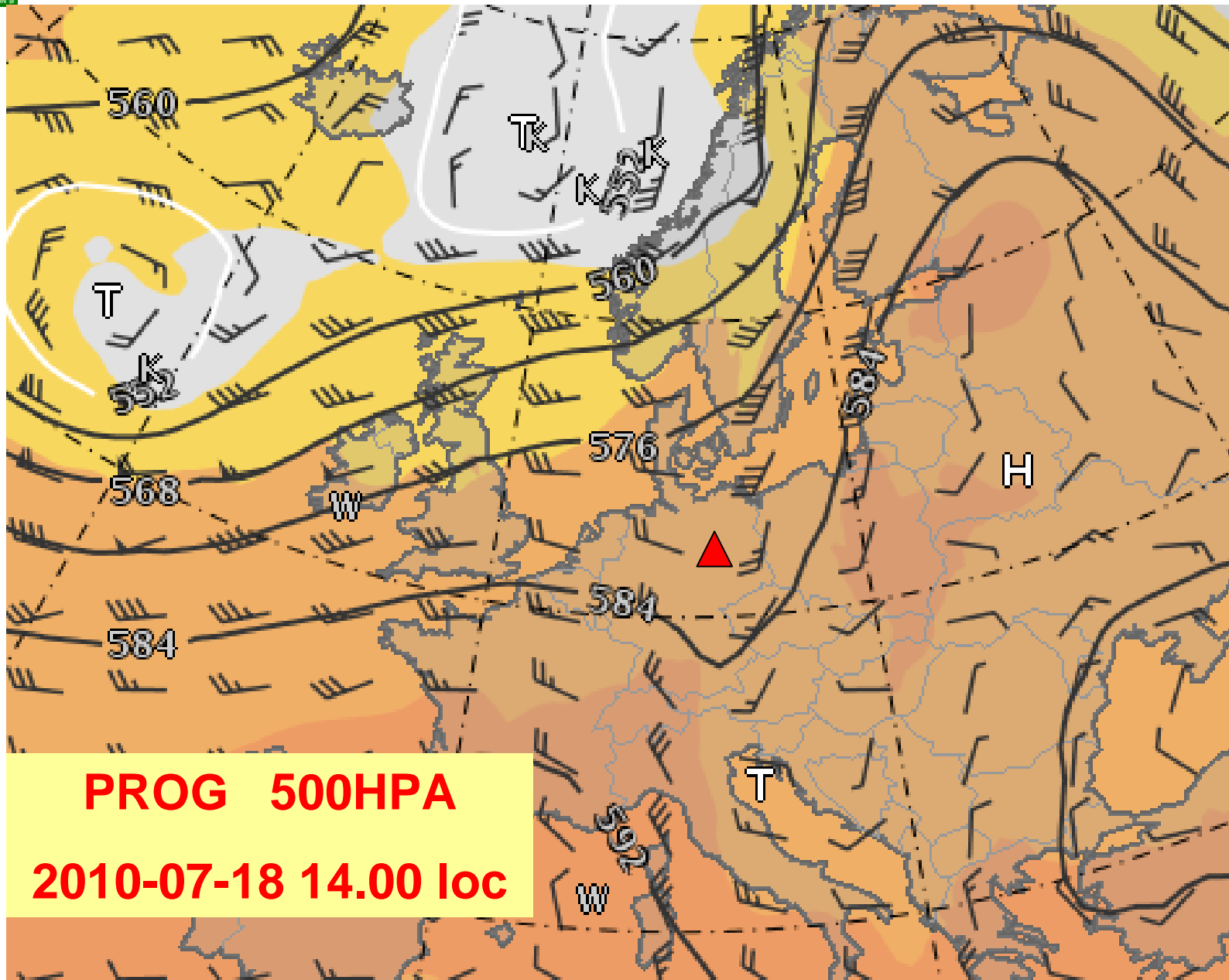
Lilienthal Glide 2010

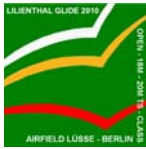
OFFENE-, 18 METER-, DOPPELSITZER - KLASSEN



Lilienthal Glide 2010

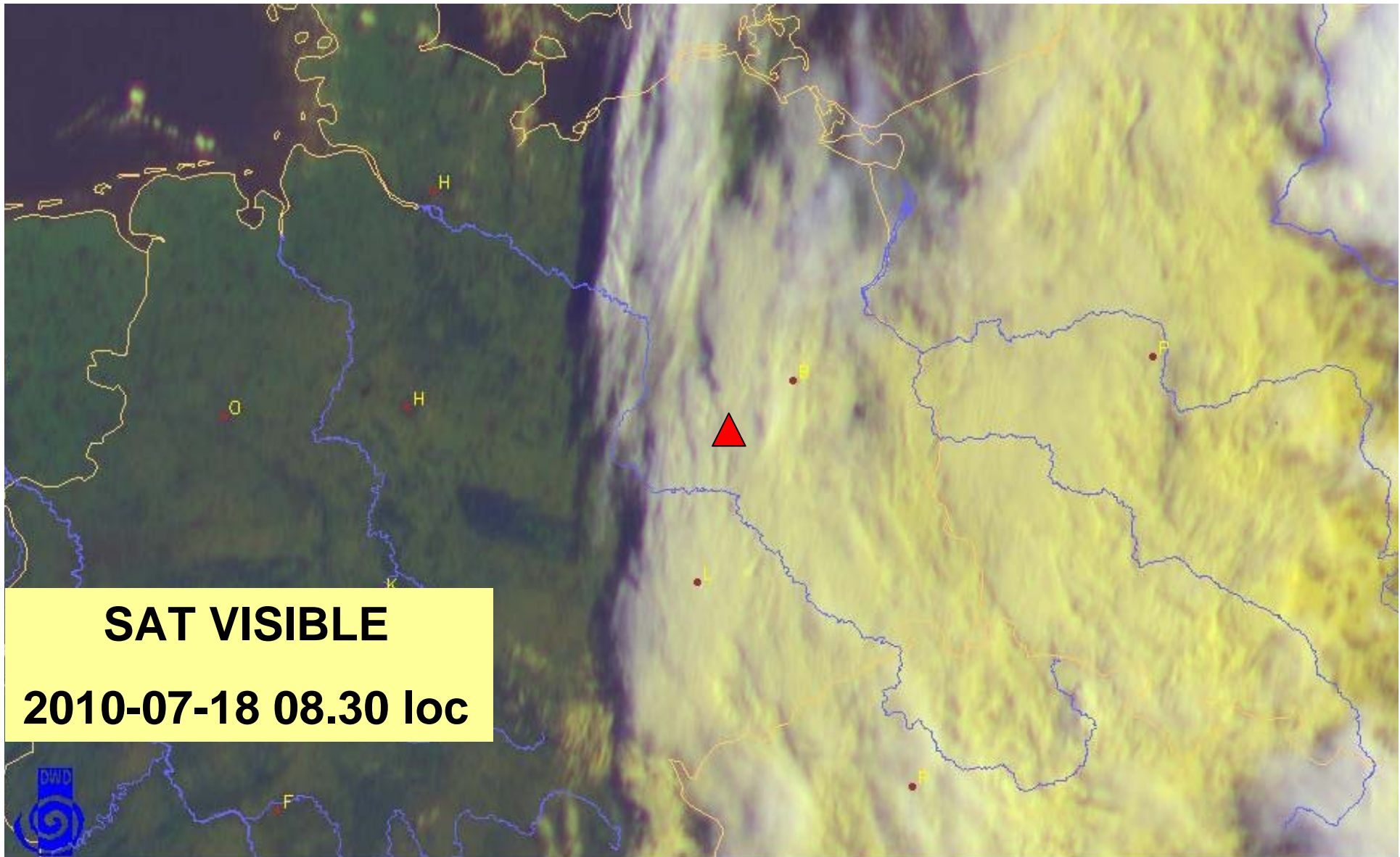
OFFENE-, 18 METER-, DOPPELSITZER - KLASSEN





Lilienthal Glide 2010

OFFENE-, 18 METER-, DOPPELSITZER - KLASSEN



SAT VISIBLE

2010-07-18 08.30 loc



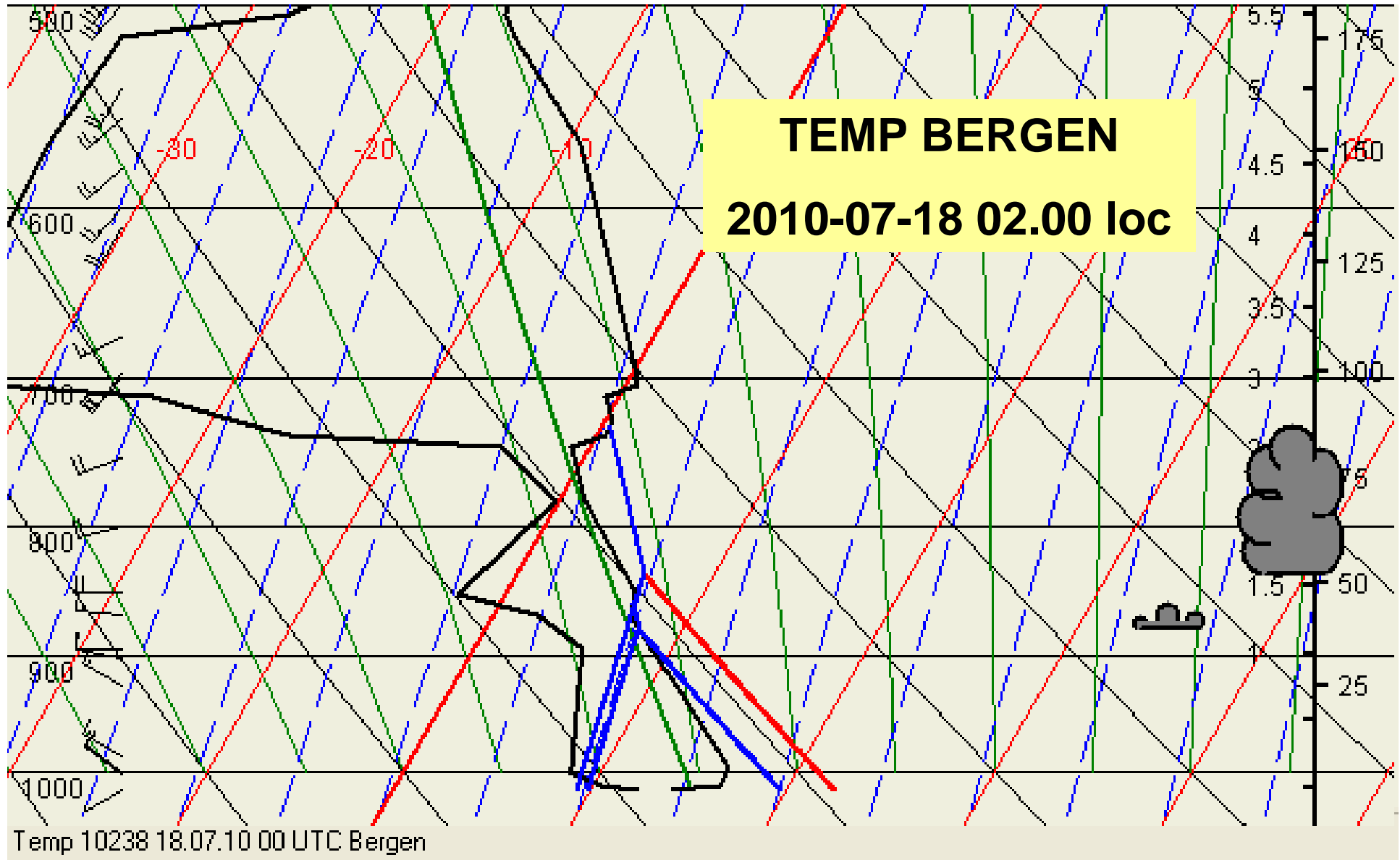
MET9 RGB-1-12-9i-N 18.07.2010 06:30 UTC

Copyright 2010 Deutscher Wetterdienst/DWD



Lilienthal Glide 2010

OFFENE-, 18 METER-, DOPPELSITZER - KLASSEN





Lilienthal Glide 2010

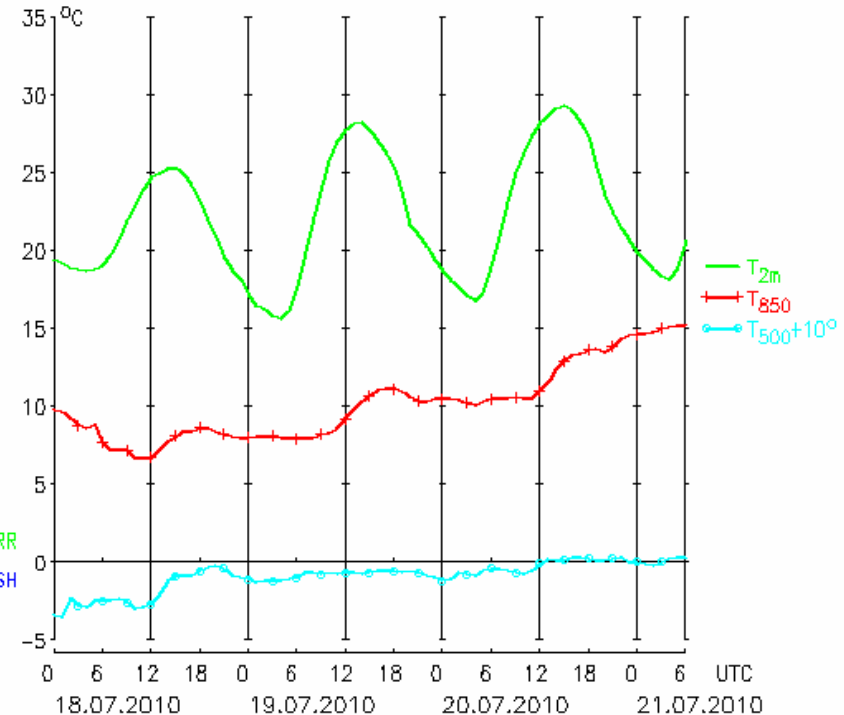
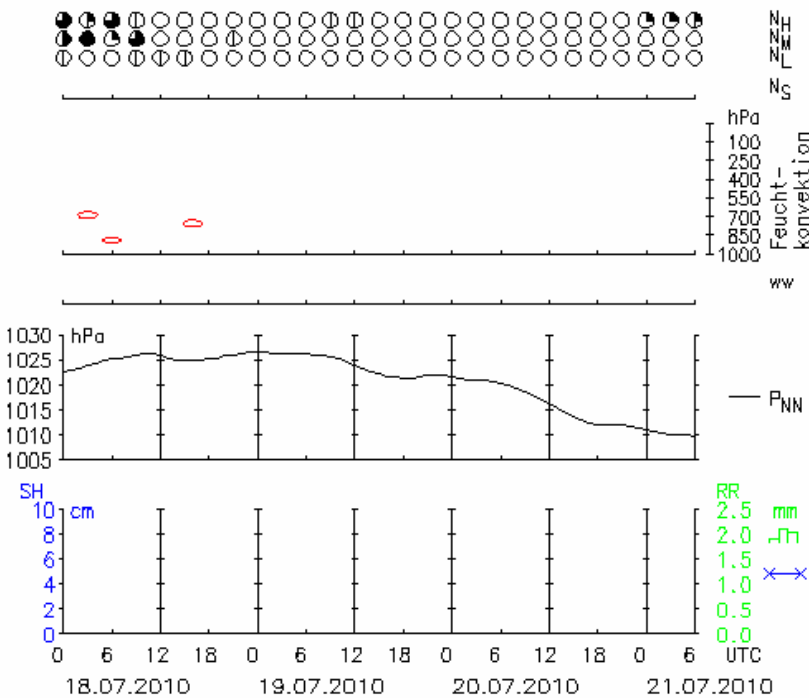
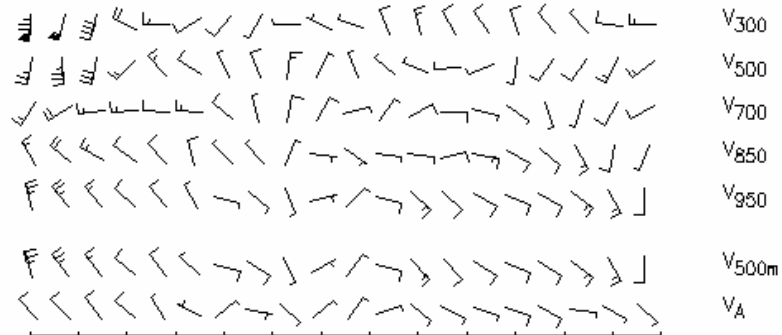
OFFENE-, 18 METER-, DOPPELSITZER - KLASSEN



METEOGRAMM

Lüsse

SO / MO / DI



LM Gitterpunkt Lüsse LAM= 12.6E, PHI= 52.2N H= 55m